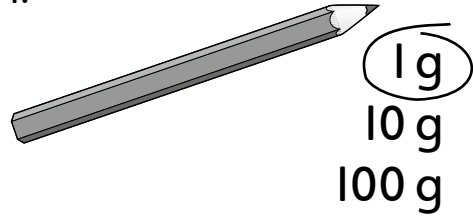


# Grams and kilograms

Circle the weight you think is the nearest for each object.

1.

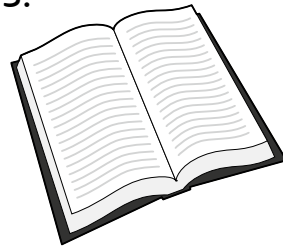


2.



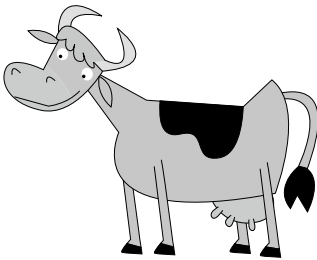
12 g  
120 g  
500 g

3.



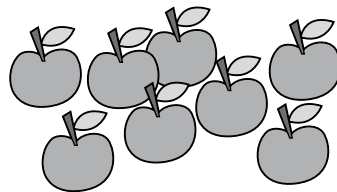
500 g  
500 kg  
50 g

4.



60 kg  
600 kg  
6 kg

5.



1 kg  
100 kg  
100 g

6.



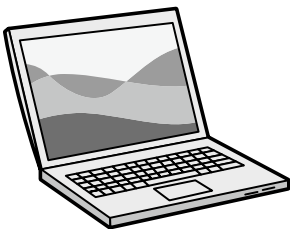
1 g  
1 kg  
100 g

7.



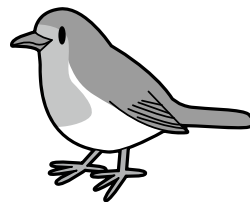
30 g  
2 kg  
800 g

8.



50 g  
3 kg  
90 kg

9.



3 kg  
70 g  
900 g



I can estimate the weights of objects

