

East Dunbartonshire

# Senior Phase Partnership Prospectus 2018-19



sustainable thriving achieving

**East Dunbartonshire Council**

[www.eastdunbarton.gov.uk](http://www.eastdunbarton.gov.uk)

[www.eastdunbarton.gov.uk/edopps4all](http://www.eastdunbarton.gov.uk/edopps4all)

# Senior Phase Partnership 2018-19

Developing the Young Workforce

Skills for Learning, Life and Work



Find out what opportunities are available to you →



Care, Health & Sport Industries



Creative & Digital Industries



Business & Services Industries



Science, Engineering, Design & Manufacture Industries



Care, Health & Sport Industries

Creative & Digital Industries

Business & Services Industries

Science, Engineering, Design & Manufacture Industries

Foundation Apprenticeships

Supported Courses

# Contents

<b>General Information</b>	<b>4-5</b>	Professional Cookery SCQF 3	40
<b>SCQF Framework</b>	<b>6</b>	Professional Cookery SCQF 4	41
<b>Care, Health &amp; Sports Industries</b>	<b>7</b>	<b>Science, Engineering, Design &amp; Manufacture</b>	<b>42</b>
Applied Anatomy SCQF 7	8	Automotive Engineering SCQF 4	43
Care SCQF 6	9	Building Services Engineering SCQF	44
Early Education & Childcare SCQF 5	10	Mechanical Engineering SCQF 7	45
Introduction to Health, Child & Social Care SCQF 5	11	Computer Aided Design SCQF 7	46
Introduction to Nursing SCQF 5	12	Construction SCQF 4	47
Health & Social Care: Skills for Practice SCQF 6	13	Construction SCQF 5	48
Psychology SCQF 6	14	Construction Crafts SCQF 4	49
Coach4Success	15	Construction Crafts SCQF 5	50
Coach of Tomorrow	16	Construction Skills for Young Women SCQF 4	51
Dance SCQF 6	17	Construction Management SCQF 7	52
Sport Fitness & Outdoor Education SCQF 5	18	Exploring Science SCQF 5	53
Transitions SCQF 3/4	19	Maritime Skills SCQF 5	54
<b>Creative &amp; Digital Industries</b>	<b>20</b>	<b>Foundation Apprenticeships SCQF 6</b>	<b>55</b>
Creative Digital Media SCQF 5	21	Accountancy	56
Computer Games Development SCQF 5	22	Business Skills	57
Cyber Security SCQF 4/5	23	Financial Services	58
Beauty Skills SCQF 4	24	Civil Engineering	59
Hairdressing SCQF 5	25	Engineering	60
Hairdressing & Make-Up Artistry SCQF 5	26	Mechanical Engineering	61
Personal Presentation SCQF 4	27	Creative Digital Media	62
Professional Theatre SCQF 6	28	ICT Hardware	63
Television Production SCQF 6	29	ICT Software Development	64
Sound Production: Recording SCQF 6	30	Laboratory Skills	65
<b>Business &amp; Service Industries</b>	<b>31</b>	Food and Drink Operations	66
Fashion Brand Retailing SCQF 7	32	Social Services: Children and Young People	67
Financial Services SCQF 5	33	Social Services: Healthcare	68
Journalism SCQF 6	34	<b>Supported Courses</b>	<b>69</b>
Scots & Criminal Law SCQF 6	35	Glasgow Kelvin College	70-73
Supply Chain Operations SCQF 5	36	Glasgow Clyde College	73
Up in the Air/Down on the Ground -		<b>Wider Achievement Awards</b>	<b>74</b>
Hospitality, Events & Tourism SCQF 4/5	37		
Introduction to Food Services SCQF 4	38		
Bakery and Cake Decoration SCQF 4	39		

## General information

### What is the Senior Phase Partnership?

The purpose of our Senior Phase Partnership Programme is to help students develop knowledge and skills which will prepare them for the future job market, college or university. East Dunbartonshire's Senior Phase Partnership Programme offers students a wide range of options which are accredited by the SQA or other professional bodies and provide students with skills, knowledge and experience specific to the industry sector it represents.

*"As they move into the senior phase, young people of all abilities should have the opportunity to follow industry relevant vocational pathways alongside academic studies. Thus we proposed new school-college vocational partnerships with the potential for young people to do qualifications such as National Certificates and Higher National Certificates as well as options to do the first year of a 3-4 year apprenticeship while still at school."*

Developing Scotland's Young Workforce

### Who can apply for a place?

Anyone who is in S4-S6 can apply for a place. Interested candidates should apply online at [www.eastdunbarton.gov.uk/edopps4all](http://www.eastdunbarton.gov.uk/edopps4all) by 19 March 2018. An open evening will then take place at college venues for pupils and parents. Interviews may be required for some courses to confirm candidates have a genuine interest, meet entry requirements and are suitable for the chosen course. The interview also provides an opportunity for the young person to ask any questions or raise any concerns that they may have. If courses are over subscribed your name will be added to a reserve list and you will be notified if a place becomes available.

### How are the courses delivered?

Most courses run for one academic year, with some Foundation Apprenticeships running for two academic years. The majority of courses will be delivered over two school afternoons, usually Tuesday and Thursday, however some courses have a different attendance pattern so please check course duration and attendance patterns carefully. Where appropriate courses are delivered within a realistic working environment eg Construction and Building Services Engineering are delivered in a simulated workshop.

4



### How will the Senior Phase Partnership benefit me?

Courses are designed to help you to progress in your chosen career path. This is done by developing skills that are essential for life and work:

- Attendance and punctuality
- Independent travel
- Analysing and problem solving
- Working with students from other schools
- Independent learning i.e. taking notes in tutorials

### How will I learn?

Qualifications gained through the Senior Phase Partnership Programme are structured and assessed in the same way as school qualifications and in most cases will appear on your SQA certificate in August, alongside your school subjects. Some courses are industry recognised qualifications and will be certificated separately. Colleges use the same Scottish Candidate Numbers (SCN) as schools so young people should expect to see their college results alongside other school based qualifications. Colleges, like school, can provide additional support if required.

**It is important that the Vocational Co-ordinator is informed if you require additional time for exams or require a reader/ scribe.**

### How can I progress?

When the course is complete, some young people enter further or higher education or an apprenticeship related to the training they have received. You will see a range of progression pathways in each of the course descriptors. **Progression Pathways are often dependent on having additional qualifications.**



## Additional information

### Attendance

It is important to emphasise that joining the Senior Phase Programme represents a commitment to undertake and complete the chosen course. Most courses will run on Tuesday and Thursday afternoons from 1.30pm - 4pm. Students are expected to continue to **attend college during prelims** where possible. Students are not expected to attend college during exam leave in May. Registers will be sent to schools each week and any attendance issues will be picked up and reported to the Depute Head Teacher responsible for the Senior Phase Partnership Programme in school.

### Transport

In most cases you will be transported **to** college and will be expected to travel independently **from** college. However, there are some circumstances when transport will be provided. If you travel independently, return travel expenses will be reimbursed. It is essential you apply for a Young Scot Card as this will enable you to pay discounted fares on public transport. In order to reclaim expenses, you must be able to provide proof of travel. Your bus/train tickets should be submitted to the school office and they will process your claim. If you are under 16, you can use your Young Scot Card as proof of age to claim a half fare. You will also get other benefits that come with a Young Scot Card.

Further details on how to apply for this will be on [www.eastdunbarton.gov.uk/edopps4all](http://www.eastdunbarton.gov.uk/edopps4all)

*Please note: You will only be reimbursed at the discounted rate of travel even if you buy a full price ticket.*

### Personal Protective Equipment

Some of the Senior Phase courses will require students to operate equipment and use specialist tools under supervision. This equipment known as Personal Protective Equipment (PPE) will be issued to students. Students must bring the PPE on each college day and must wear the PPE as instructed.

### Pupil Code of Conduct

All pupils involved in the Senior Phase Programme must:

- be well mannered, mature and well behaved at all times
- be prepared to participate in all aspects of the programme
- consider their personal safety and the safety of others
- abide by the Senior Phase Programme and College codes of conduct

### Points to Remember

- You must catch up any school work missed when attending college on Tuesday and Thursday.
- Weekly attendance at college is essential to ensure successful completion of the course. You **MUST** be committed to the course you select.

### Problems and Difficulties

In the event of any difficulties arising at college, the Vocational Co-ordinator, schools and colleges will work together to find a resolution. Parents/carers will be kept informed via the school.



# Understanding Senior Phase Qualifications

The Scottish Credit and Qualifications Framework (SCQF) helps people to understand and compare different qualifications in Scotland. Scottish qualifications are delivered at SCQF level 1-12, schools deliver qualifications up to SCQF 7 which is Advanced Higher.


The Senior Phase Programme offers a range of courses from SCQF

3-7. Course awards include National Progress Awards (NPA), Skills for Work Awards (SfW) as well as National Certificates (NC) and Higher National Certificates (HNC). The course award is clearly identified on each page.

**Please note: NPAs and SfW awards do not have a final exam.**

**THE SCOTTISH CREDIT AND QUALIFICATIONS FRAMEWORK**

This Framework diagram has been produced to show the mainstream Scottish qualifications already credit rated by SQA and HEIs. However, there are a diverse number of learning programmes on the Framework, which, due to the limitations of this format, cannot be represented here. For more information, please visit the SCQF website at [www.scqf.org.uk](http://www.scqf.org.uk) to view the interactive version of the Framework or search the Database.



SCQF Levels	SQA Qualifications		Qualifications of Higher Education Institutions	Apprenticeships & SVQs
12			Doctoral Degree	Professional Apprenticeship
11			Masters Degree, Integrated Masters Degree, Post Graduate Diploma, Post Graduate Certificate	Graduate Apprenticeship Professional Apprenticeship SVQ
10			Honours Degree, Graduate Diploma, Graduate Certificate	Graduate Apprenticeship Professional Apprenticeship
9		Professional Development Award	Bachelors / Ordinary Degree, Graduate Diploma, Graduate Certificate	Graduate Apprenticeship Technical Apprenticeship SVQ
8		Higher National Diploma	Diploma Of Higher Education	Higher Apprenticeship Technical Apprenticeship SVQ
7	Advanced Higher, Awards, Scottish Baccalaureate	Higher National Certificate	Certificate Of Higher Education	Modern Apprenticeship SVQ
6	Higher, Awards, Skills for Work Higher			Modern Apprenticeship Foundation Apprenticeship SVQ
5	National 5, Awards, Skills for Work National 5			Modern Apprenticeship SVQ
4	National 4, Awards, Skills for Work National 4	National Certificate	National Progression Award	SVQ
3	National 3, Awards, Skills for Work National 3			
2	National 2, Awards			
1	National 1, Awards			



Staying at School



Leaving School



Rest of my world



Advice and Support



News and events

# Care, Health & Sport Industries

## Healthcare

In the West of Scotland 61,290 currently work in Healthcare. Over 59,000 of these are in nursing or midwifery.

## Social Work

There are over 199,600 social service workers in Scotland today working with a variety of different people who use services.

## Sport

In Scotland sport contributes £1.8 billion to the economy and there are around 46,300 people employed in sport-related jobs.

# Applied Anatomy

## Glasgow Clyde College, Anniesland Campus SQA Unit, SCQF 7

### Course Outline

This SQA unit is normally delivered in the framework of the HND Sports Therapy as part of a wider body of learning. This challenging course is aimed primarily at candidates who have an aspiration to pursue a medical or sports therapy related course and is designed to provide a good working knowledge of human anatomy in preparation for university study.

Assessment of the course will involve 'pressed surface' observation of anatomical structure (palpation), an open-book extended response report and a closed-book restricted response.

Students should be made aware that there will be 'hands-on' approach to learning anatomical structures with a requirement for surface contact with other students.

### Qualification Breakdown

This unit is designed to provide the candidate with a good working knowledge of human anatomy. This unit includes competencies and scope of practice as specified by the Society of Sports Therapists:

- Location of bones and superficial, palpable bony points
- Location of superficial muscles/tendons
- Location and demonstration of contractions of superficial muscles

### Course Entry Requirements

- Higher Biology or Higher Human Biology
- Working towards Advanced Higher Biology.

Confirmation of places will be given post-results.

### Attendance Pattern

Tuesday **or** Thursday 4.30pm - 6.30pm

### Progression Pathways

- University courses in Medicine, Physiotherapy, Sports Science, Vet Science







Staying at School



Leaving School



Rest of my world



Advice and Support



News and events

# Care

## Glasgow Kelvin College, Springburn Campus SQA Higher

### Course Outline

The main purpose of this course is to enable learners to understand and explain why people use care services and to develop the knowledge and value base required for working in contemporary care practice in settings such as health care and social care. Learners will develop knowledge, understanding and attributes that will help them to make informed decisions to support the health and wellbeing of others. It will allow candidates to broaden their knowledge and understanding of a particular area of care work and help prepare them to move into working in the care field.

### Qualification Breakdown

- Care: Values and Principles
- Care: Social Influences
- Care: Human Development and Behaviour
- Added Value: Care Higher Project

The Research project is marked by SQA which gives the grade for the Higher.

### Course Entry Requirements

- 3 National 5 at A-C including English
- An interest in the Care industry

### Attendance Pattern

Tuesday and Thursday 1.30pm - 4pm

### Progression Pathways:

- HNC Social Care, HNC Health Care
- Degree in Nursing, Psychology, Social Work and Applied Health Care





# Early Education & Childcare

## Glasgow Kelvin College, Springburn Campus SQA National 5 Skills for Work

### Course Outline

This is an introductory qualification that develops the skills, knowledge and attitudes needed for work in the early education and childcare sector.

Learners will develop transferable employability skills, including: an understanding of the workplace and the employee's responsibilities (e.g. time-keeping, appearance, customer care); self-evaluation skills; positive attitude to learning; flexible approaches to solving problems; adaptability and positive attitude to change; confidence to set goals, reflect and learn from experience and skills to become effective job-seekers and employees.

### Qualification Breakdown

Mandatory units:

- Child Development and Health
- Play in Early Education and Childcare
- Working in Early Education and Childcare

Optional Unit:

- Care and Feeding of Children

### Course Entry Requirements

- 3 National 4 awards
- Working towards National 5 English

### Attendance Pattern

Tuesday and Thursday 1.30pm - 4pm

### Progression Pathways

- Guaranteed interview for NC/HNC Early Education and Childcare at Glasgow Kelvin College
- Modern Apprenticeships in Childcare.

### Enhancement

As part of your course you can have the opportunity to undertake a period of work experience in an East Dunbartonshire Council Local Authority Nursery. Please ask your guidance teacher or work experience co-ordinator to arrange this.





Staying at School



Leaving School



Rest of my world



Advice and Support



News and events

# Introduction to Health, Child and Social Care



## City of Glasgow College, City Campus SQA Units, SCQF 5

### Course Outline

This course is designed with school students in mind, covering today's current and most important issues e.g. Mental Health, Psychology, Human Development and Social Influences.

Students are provided with real world skills and knowledge to gain experience and insight to possible future careers in the care sector.

### Qualification Breakdown

- Human Development and Behaviour (Psychology)
- Child Development and Health
- Understanding Mental Health and Mental Illness
- Social Influences (Sociology)

### Course Entry Requirements

- 3 National 4 awards from English, Maths, History, Modern Studies or Geography
- Working towards 3 National 4 awards
- A keen interest in working with people and developing good communication skills
- Pupils will be invited to attend an informal interview to assess their aptitude and interest to study this subject

### Attendance Pattern

Tuesday and Thursday 1.30pm - 4pm

### Progression Pathways:

- NC SCQF 5 Child, Health and Social Care/Early Education and Childcare
- NC SCQF 6 Early Education/Health & Social Care
- Modern Apprenticeship in Early Education/Social Care



# Introduction to Nursing

## Glasgow Clyde College, Cardonald Campus SQA Units, SCQF 5, plus Glasgow Clyde College Certificate

### Course Outline

This programme will provide students with an introduction to the nursing profession which will allow them to examine a career in nursing or health care. The course consists of some practical sessions within the college skills lab carrying out basic nursing skills such as bed bathing and prevention of infection.

The roles available within nursing will be explored and the responsibilities of a health care professional will be addressed. Candidates will be introduced to speakers from the health care sector and will attend clinical placement visits to meet with different areas within nursing.

The course tutors are from a nursing background and will share their own experiences and will subsequently offer advice on career options.

To support employment opportunities, certificates include Emergency First Aid, Health and Safety and an Introduction to Mental Health.

### Qualification Breakdown

4 SQA Units plus specific additional employment certificates

- Basic Health Care Needs
- Prevention of Infection
- The Human Body
- Roles and Responsibilities (Skills for Work)
- Emergency First Aid, Health & Safety (in-house certificate)
- Introduction to Mental Health (in-house certificate)

### Course Entry Requirements

- National 5 English and National 5 Maths or Numeracy
- A keen interest in the nursing profession

### Attendance Pattern

Tuesday and Thursday 1.30pm - 4pm

### Progression Pathways:

- NC Level 6 Health Care (Pre Nursing course with clinical placement on average one day per week). Candidates require to have successfully completed the full Intro to Nursing course plus three passes at National 5 grade A-C.
- HNC Care and Administrative Practice (Equivalent to First Year Nursing). Candidates require to have successfully completed the Intro to Nursing plus have two additional Highers which must include English.



# Health & Social Care: Skills for Practice

## City of Glasgow College, City Campus SQA National Progression Award, SCQF 6

### Course Outline

This is an excellent course for any student looking to commence a career in care or nursing. Successful completion of the NPA enables the student to enter further study for example HNC Care & Administrative Practice which gives them the qualification to apply for various nursing courses or other Allied Health Professional courses.

The course provides real life skills and opportunities for career planning and enhancement of employment prospects.

The qualification also meets the National Occupational Standards for Employers. NOS describe the skills, knowledge and understanding needed to undertake a particular task or job to a nationally recognised level of competence. They focus on what you need to be able to do, as well as what you must know and understand to work effectively.

### Qualification Breakdown

- Person Centred Approach to Care
- Safe Practice in Care
- Practical Caring Skills

### Course Entry Requirements

- 5 National 5 awards at A-C
- Potential candidates will also be interviewed and should provide a reference from school
- An interest in the carer or nursing profession.

### Attendance Pattern

Tuesday and Thursday 1.30pm - 4pm

### Progression Pathways:

- NC Health & Social Care
- HNC Social Services
- HNC Care & Administrative Practice
- Modern Apprenticeships in the Health or Care sectors







# Psychology

## Delivered at various colleges SQA Higher

### Course Outline

The aim of the course is to provide a broad overview of the discipline and opportunity to study a selection of topics in depth. You will develop an understanding of psychological theories, concepts, research studies, research methods, terminology and applications.

This involves looking at:

- Developmental Psychology
- Cognitive Psychology
- Physiological Psychology
- Social Psychology, Psychology of Individual Differences
- Use research methods

### Qualification Breakdown

- Psychology: Research
- Psychology: Individual Behaviour
- Psychology: Social Behaviour

You must pass all of the units as well as the final exam to achieve this award.

### Course Entry Requirements

- Higher English at A/B

### Attendance Pattern

Tuesday and Thursday 1.30pm - 4pm

### Progression Pathways

- Degree level courses in Psychology/Arts/Social Sciences/Sciences/Criminology





# Coach4Success

## Rangers Training Centre, Milngavie SFA Coaching Badges 1.1. & 1.2

### Course Outline

This programme uses football coaching as a vehicle to enhance employability skills on leaving school by providing professional coach mentoring, work experience and Scottish Football Association (SFA) Level 1.1 and 1.2 accredited coaching badges (student must be aged 16 by the date of SFA Coaching badges if they are to be certificated).

### Qualification Breakdown

- Scottish Football Association Coaching badges 1.1 Early Touches and 1.2 Coaching Young Footballers
- A reference from the club to take to future employers
- Work Experience

### Course Entry Requirements

- A minimum of 90% attendance is required in school and on the programme. Failure to meet this target could result in withdrawal.
- Enthusiasm, respect for others and maturity to work towards a professional coaching qualification.

### Attendance Pattern

Wednesday 1.30pm - 3.30pm

Work experience 3.30pm - 5.30pm optional

### Progression Pathways

- NC courses in Care, Humanities or Sport
- Employment in the Sport and Health industry



# Coach for Tomorrow

**Glasgow Kelvin College, Springburn Campus and Rangers Training Centre, Milngavie**  
**SQA Units, SCQF Level 2/3**

## Course Outline

**This programme is designed for pupils who require additional support.** Coach for Tomorrow is delivered in partnership between Glasgow Kelvin College and Rangers Charity Foundation and is aimed at Senior Phase students who are interested in Health and Wellbeing, Football and Sport. This programme uses football coaching as a vehicle to enhance employability skills on leaving school by providing coach mentoring, team working and development of communication skills.

## Qualification Breakdown

- Wellbeing Award
- Exploring Wellbeing
- Improving Wellbeing
- Scottish football Association Coaching Badges
- A reference from the club to take to future employers and gain potential volunteer roles

## Course Entry Requirements

- No formal entry requirements but candidates must have a strong interest in Sport and Fitness

## Attendance Pattern

Wednesday all day.

Morning session at Murray Park/Afternoon session at Glasgow Kelvin College

## Progression Pathways

- Further courses within the Faculty of Care, Humanities & Sport at Glasgow Kelvin College
- Employment in the Sport and Health industry





# Dance

## Glasgow Kelvin College, Easterhouse Campus SQA Higher

### Course Outline

This course takes account of the knowledge and skills required by people who have an interest in dance performance and who may wish to continue in further and higher education. In this course you will learn and develop techniques in a range of dance styles and choreography.

### Qualification Breakdown

- Dance: Choreography
- Dance: Contemporary
- Dance: Jazz

### Course Entry Requirements

- Previous dance experience and appreciation of performing arts
- Audition
- Applications will also be considered from pupils wishing to undertake SCQF 5 NPA

### Attendance Pattern

Tuesday and Thursday 1.30pm - 4pm

### Progression Pathways:

- NQ Dance
- HND Professional Dance Performance





# Sport, Fitness & Outdoor Education

## Glasgow Kelvin College, Springburn Campus SQA National Progression Award, SCQF 5

### Course Outline

If you are a lover of sport, then this programme is for you! This course will provide you with the basis for employment in sports facilities, gyms and outdoor activity centres. It's practical in nature and focuses on a range of sports and activities.

### Qualification Breakdown

- Contemporary Fitness and Exercise Training Methods: An Introduction
- Developing Leadership within Physical Activities
- Nutrition, Health & Wellbeing
- Teamwork through Sport & Recreation Activities
- Health and Safety in the Provision of Sporting Activities: An Introduction

### Course Entry Requirements

- National 4 English and Physical Education
- Working towards National 4 English and Physical Education
- A strong interest in sport, fitness or outdoor education
- Course entry will be at the discretion of the college by means of a short interview

### Attendance Pattern

Tuesday and Thursday 1.30pm - 4pm

### Progression Pathways

- NC/HNC Outdoor Education/Fitness, Health & Exercise
- Employment as Pool Lifeguard/Sports Coach/Fitness Instructor/ Personal Trainer/Outdoor Activities Instructor



# Transitions

## City of Glasgow College, City Campus City of Glasgow College Certificate at SCQF Level 3/4

### Course Outline

**This course is designed for pupils with additional support needs.** The course will assist pupils with Asperger's Syndrome to make a successful transition from school to Further Education and training. The group will develop communication skills, social skills, negotiation skills and confidence.

### Qualification Breakdown

- Core Skills
- Communication
- Personal & Social Development
- Skills for Life and Work

### Course Entry Requirements

- A diagnosis of ASD
- Working towards level 3-4 in Literacy and Numeracy
- A desire to continue their studies in Further Education.
- Interested pupils will attend a taster session and this observation will be part of a selection process

### Attendance Pattern

Tuesday 9.30am - 12noon

### Progression Pathways:

- Full time transition course
- Mainstream college courses in vocational areas of choice
- Generally this course encourages students to apply to a range of Further Education mainstream courses







Staying at School



Leaving School



Rest of my world



Advice and Support



News and events

# Creative & Digital Industries

## Information Technology

There are 100,000 people employed in IT & Telecoms and it is estimated that growth in this industry could translate into 39,000 new jobs, across many occupations and sectors, over the next 5 to 7 years.

## Creative Media

TV production is expected to grow over the 3-5 years. Behind the scenes roles in theatre and music performance are real growth sectors.

## Creative Industries

Over 68,500 people, around 2.5% of Scottish employment, work in Scotland's creative industries. The industry is expected to grow by 2% – that's an estimated 1,300 jobs being created – per year.

Information from 'MyWorld of Work' courtesy of SDS

# Creative Digital Media

## City of Glasgow College, City Campus SQA National 5 Skills for Work

### Course Outline

This course is designed to provide a qualification which reflects the knowledge and skills required for employment or further study in the Creative Industries.

During the first unit - Creative Industries: An Introduction - you will learn about the wide range of creative industries sectors, the job roles and opportunities for freelance working. You will choose a sector to explore and will research its products, services and employment opportunities.

The Creative Process, Skills Development and The Creative Project units are all integrated into one project. The project will vary, but this year the task was to create a magazine style programme, like the One Show. You will be required to work in a group, with each group producing a section of the programme. As part of the team you will be responsible for pitching your idea, scripting, storyboarding, presenting, then recording and editing your section. During this process there will be a wide variety of assessment instruments to meet the needs of all students; including written, oral response, presentations and practical skills.

The course will enable candidates to develop practical skills together with employability skills and attitudes needed to work in the Creative Industries. You will develop skills in video production as well as skills in communication, working with others, problem solving, writing, reading, speaking and listening.

### Qualification Breakdown

- Creative Industries: An Introduction
- Creative Industries: Skills Development
- Creative Industries: The Creative Process
- Creative Industries: Creative Project

### Course Entry Requirements

- Pupils working towards National 5 English but other language based subjects such as History or Geography will be considered
- An interest in and curiosity for the media, film and television in particular.

### Attendance Pattern

Tuesday and Thursday 1.30pm - 4pm

### Progression Pathways:

- NC/HNC in Media related courses
- Modern Apprenticeship in the Creative industries





Staying at School



Leaving School



Rest of my world



Advice and Support



News and events

# Computer Games Development

## Glasgow Clyde College, Anniesland Campus SQA National Progression Award, SCQF 5

### Course Outline

The National Progression Award (NPA) introduces you to the skills required by people who have an interest in the games industry and wish to enter future employment in ICT and new technologies or continue into further and higher education.

In this course you will research various games types and platforms and discover what makes a game playable. You will also learn about the components that make up games and what is required for different playing platforms. When you have developed your knowledge and skills, you will be required to design and develop a game by creating a set of objects including characters, backgrounds and sounds.

Throughout the course you will increase your knowledge and skillset and will learn how to improve your game to include behaviours designed to enhance game play. Your final goal will be to create a playable game and publish it on the internet.

### Qualification Breakdown

- Computer Games: Design
- Computer Games: Media Assets
- Computer Games: Development

### Course Entry Requirements

- National 3 or 4 Literacy and Numeracy
- National 4 Computing Science
- A genuine interest in the Gaming industry

### Attendance Pattern

Tuesday and Thursday 1.30pm - 4pm

### Progression Pathways:

- NC/HNC/HND Computing
- Dependent on meeting entry requirements, related university courses
- Modern Apprenticeship in ICT



# Cyber Security

## New College Lanark, Kirkintilloch Campus SQA National Progression Award, SCQF 4/5

### Course Outline

The NPA in Cyber Security provides foundation knowledge and skills in data security, digital forensics and ethical hacking and is a skills pipeline into the cyber security industry.

The course will encourage learners to improve their cyber hygiene and enable them to identify security weakness safely, legally and ethically. They will also help learners to contribute more safely to virtual communities.

Ethics and the law are fundamental aspects of the award. You will become a knowledgeable and skilled individual who is aware of the potential misuses of, and unauthorised access to, computer systems but who can use these competences for legal and ethical purposes.

This qualification also aims to provide opportunities to develop key cognitive skills such as problem solving, analysis, evaluation and collaborative skills, as well as opportunities to develop employment skills related to National Occupational Standards. There are employment opportunities in this field as approximately 14% of IT posts in the UK now comprise of a cyber security role as demand rises for cyber security experts.

### Qualification Breakdown

- Digital Forensics
- Ethical Hacking
- Data Security

### Course Entry Requirements

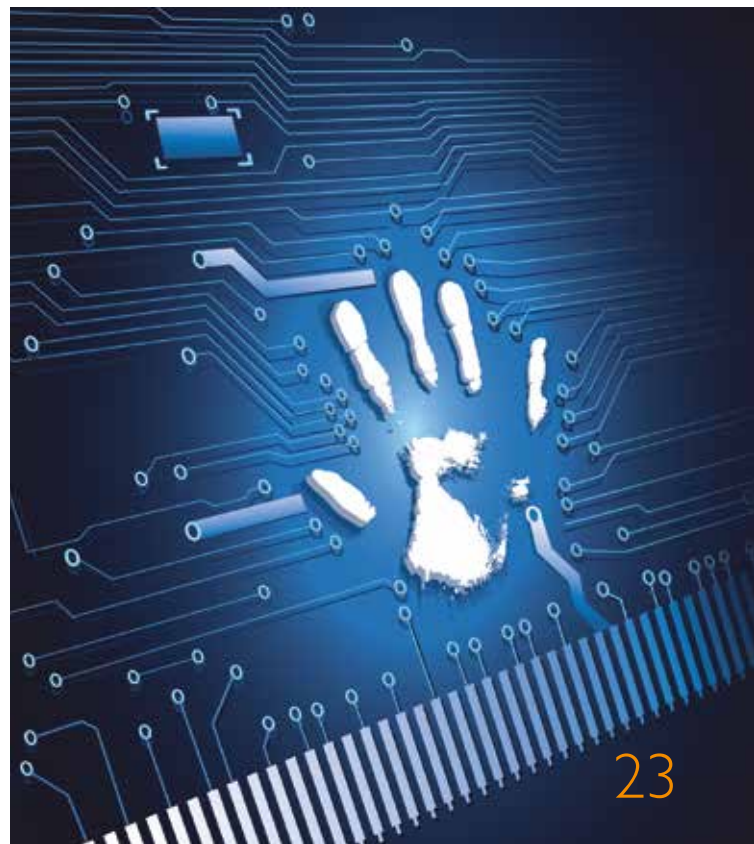
- National 4 Literacy and Numeracy
- National 4 Computing Science units
- A keen interest in cyber security and ethical hacking

### Attendance Pattern

Tuesday and Thursday 1.30pm - 4pm

### Progression Pathways

- NQ Networking and Cyber Security SCQF 6
- Other Computing Science courses at Further Education colleges
- Modern Apprenticeship in ICT





## Beauty Skills

### Glasgow Kelvin College, Springburn Campus SQA National Progression Award, SCQF 4

#### Course Outline

This course will provide learners with the introductory skills of basic beauty techniques, including facial care, nail care, skills in make-up application, current techniques and face painting in addition to health and safety in the salon.

The course will encourage development in transferable skills such as working with others and communication which will help prepare you for progression to employment, further education or training. Practical elements of the course will be carried out and assessed in a realistic working environment while the evidence for the theoretical elements will be the collation of a portfolio.

#### Qualification Breakdown

- Beauty Skills: An Introduction
- Cosmetology: Make Up Artistry

#### Course Entry Requirements

- Working towards National 4
- Good communication skills
- Ability to work independently and as part of a team
- A keen interest in beauty is essential

#### Attendance Pattern

Tuesday and Thursday 1.30pm - 4pm

#### Progression Pathways

- NC Beauty Care and Make Up SCQF 5
- Beauty Therapy Access SCQF 5
- Dependent on meeting entry requirements, Make-up Artistry SCQF 6
- Modern Apprenticeship in a salon
- Employment in the industry





# Hairdressing

## **New College Lanarkshire, Kirkintilloch Campus, SQA National 5 Skills for Work**

### **Course Outline**

Are you interested in a career in Hairdressing? Career options would include hair stylist, barber, salon receptionist. This course will provide an introduction to Hairdressing with a focus on experiencing a salon environment. You will gain practical experience of general salon duties, reception skills, communication and customer care.

Specific skills in shampooing, conditioning, basic scalp massage and drying hair are developed. Current fashion trends are identified from a variety of sources, with candidates having the opportunity to experiment to produce an image which reflects these trends. Emphasis throughout all units is on the employability skills and attitudes which will help to prepare candidates for the workplace.

*Please note: Pupils must be 16 to complete the Hair Colouring unit.*

### **Qualification Breakdown**

- Hairdressing: Working in the Salon
- Hairdressing: Salon Awareness
- Hairdressing Employability Skills
- Hairdressing: Creativity

### **Course Entry Requirements**

- No formal entry requirements, however, pupils should have a genuine interest in the subject area
- Pupils will be invited to attend an informal interview to assess their interest to study this subject

### **Attendance Pattern**

Tuesday and Thursday 1.30pm - 4pm

### **Progression Pathways**

- NQ/NC Beauty Therapy/Hairdressing/Fashion Make-up
- Modern Apprenticeship in a salon



# Hairdressing and Make Up Artistry

## City of Glasgow College, City Campus SQA Units, SCQF 4/5

### Course Outline

The course delivers Cosmetology and Skills for Work Units and is designed to introduce you to this exciting industry and to careers in both hairdressing and make-up artistry.

Throughout the programme you will develop a range of skills in hairdressing that include shampooing, section blow drying, curling, straightening, long hair styling and braiding. The Make Up Artistry element of the course includes face painting and basic special effects. During the programme you will also be required to research the career of a hairdresser or make-up artist as well as create mood boards and research both male and female products and cosmetics.

In addition to developing practical skills in hairdressing and make-up artistry you will also develop your skills in communication, research and creativity. Many of these skills are transferable to various employment opportunities within the industry. Emphasis throughout the course is on employability skills and attitudes which will help to prepare you for the workplace.

### Qualification Breakdown

- Cosmetology: Career Options and Choices
- Cosmetology: Hairdressing Practical Skills
- Cosmetology: Make-up Artistry Practical Skills
- Cosmetology: Product Awareness
- Creativity: Hairdressing

### Course Entry Requirements

- Working towards National 4 in English
- A keen interest in hairdressing and make-up artistry is essential

### Attendance Pattern

Tuesday and Thursday 1.30pm - 4pm

### Progression Pathways

- NC Ladies Hairdressing
- Beauty Therapy Access SCQF 5
- Gents Barbering SCQF 5
- Dependent on meeting entry requirements, Make-up Artistry SCQF 6
- Modern Apprenticeship in a salon
- Employment in the industry



# Personal Presentation

## City of Glasgow College, City Campus SQA Units, SCQF 4

### Course Outline

**This course is designed for pupils who require additional support.** The aim of the course is to enable students to identify factors which contribute to their personal care and appearance and learn techniques to enhance their natural look.

They will review their own personal care routine and identify skills which will benefit their general appearance appropriate for leisure and employment.

Within the unit students will undertake practical tasks which will include-

- Skin care - cleanse, masks, tone and moisturise
- Nail care - file, cuticle work, hand massage
- Hair care - shampoo and styling techniques
- Eyebrow shaping

### Qualification Breakdown

- Personal care and appearance for employment
- Skills and techniques for personal care and appearance for employment

### Course Entry Requirements

- S4 - S6 pupil
- A genuine interest in the subject area.

### Attendance Pattern

Friday 1pm - 3.30pm

### Progression Pathways:

- Senior Phase Hairdressing SQA National 4 Skills for Work
- Senior Phase Beauty and Make Up SQA National 4 Skills for Work
- Employment in the hair or beauty industry





# Professional Theatre Preparation

## Glasgow Kelvin College, Easterhouse Campus SQA National Progression Award, SCQF 6

### Course Outline

This course helps you develop the knowledge and skills required by people who have an interest in acting and theatre and wishing to enter future employment in that area or onto further and higher education.

In this course you will learn about and develop techniques in expression and communication to an audience, and about theatre arts and performance.

### Qualification Breakdown

- Preparation for Audition
- Drama: Acting Skills
- Drama: Voice Skills

### Course Entry Requirements

- National 4 Drama
- A keen interest in developing skills in acting and performance
- Entry to the course will be subject to an audition which will take the form of a performance of two short age-appropriate monologues

### Attendance Pattern

Tuesday and Thursday 1.30pm - 4pm

### Progression Pathways:

- NC Acting and Performance
- HND Acting and Performance





# Television Production

## City of Glasgow College, City Campus SQA National Progression Award, SCQF 6

### Course Outline

This course has been designed to provide you with an introduction to the skills required in the Television industry and as a pathway to further study in this field.

The course is practical in nature and will involve a hands-on approach to television, giving you experience in camera operations, sound, directing and editing. You will have access to equipment and resources at the college which will enable you to produce and create your own short television programme.

During the course you will also develop skills in working with others, problem solving, writing, reading, speaking and listening.

### Qualification Breakdown

- Media: Sound Recording for Single Camera
- Media: Directing a Single Camera Production
- Media: Basic Video Editing
- Media: Basic Video Camera Operations

### Course Entry Requirements

- Ability to work at National 4 level
- National 4 units in Literacy, Numeracy and Information Technology
- Capable of Problem Solving and Working With Others at SCQF 4
- An interest in Creative industries

### Attendance Pattern

Tuesday and Thursday 1.30pm - 4pm

### Progression Pathways

- NC Media or Television Production
- Dependent on meeting entry requirements HNC/HND Media or Digital Media related courses
- Modern Apprenticeships in the Creative industries





Staying at School



Leaving School



Rest of my world



Advice and Support



News and events

# Sound Production: Recording

**Glasgow Clyde College, Anniesland Campus  
Audio Lounge Studio, Craigmont Street, Glasgow  
SQA National Progression Award, SCQF 6**

## Course Outline

Are you interested in a career in the music business? Would you like to gain skills in sound production, recording and music remixing? This course will offer you the opportunity to develop key transferable skills such as enterprise, technology, employability and planning whilst focusing on the music industry and the three areas below.

## Qualification Breakdown

- Sound Engineering and Production
- Sound: Understanding the Signal Path
- Sound: Music Remixing

## Course Entry Requirements

- National 5 Music
- National 5 Computing
- National 5 in Physics and/or Maths will also be considered

## Attendance Pattern

Tuesday and Thursday 1.30pm - 4pm

## Progression Pathways

- NC in Sound Production
- NPA in Sound Production: LIVE
- HNC/HND Sound Production
- Employment in Creative Industries sectors including Recording Engineer/Producer/Live Sound Engineer/Backline Technician/Foley Artist





Staying at School



Leaving School



Rest of my world



Advice and Support



News and events

# Business & Service Industries

## Tourism

In 2015 Scotland attracted over 14.6 million visitors with spending by tourists in Scotland generating around £12 billion. Employment in the tourism-related industries in Scotland was 196,000 in 2014 – accounting for around 7.7% of employment in Scotland.

## Finance

Financial services sector contributed £8.8 billion to the Scottish economy in 2010 and directly employs 86,000 people in Scotland.

## Food & Drink

Food and drink is the largest manufacturing sector in Scotland. There are 18,850 food and drink businesses in Scotland. The Scottish sector employs around 115,400 people. The industry is predicted to need more recruits who understand sustainability.

Information from 'My World of Work' courtesy of SDS





# Fashion Brand Retailing

**Glasgow Caledonian University**  
**University Accredited, SCQF Level 7**  
**20 Credit module, equivalent to Advanced Higher**  
**Grade C**

## Course Outline

Fashion Brand Retailing is an exciting course, which allows students to sample university life at Glasgow Caledonian University, the leading Scottish provider of higher education in the field of fashion, marketing and retailing. As well as the chance to meet new people, you will register as a part-time student at the University, gaining a matriculation card and full access to the University's facilities and support networks.

## Qualification Breakdown

There are two themes, each with a specific assessment:

- Theme 1: Role, Function and Meaning of Fashion  
Making Fashion - where does fashion come from?
- Theme 2: How does Fashion Retailing work?  
What makes a Fashion Retailer successful?

## Course Entry Requirements

- Higher English at Grade C
- National 5 English working towards achieving the Higher in S6 will be considered
- National 5 Maths.

You will be asked to submit an application form with either a one page essay on the current key fashion trends or a mood board depicting key trends for Spring/Summer 2018.

## Attendance Pattern

Tuesday and Thursday 1.30pm - 4pm

## Progression Pathways

- Progression to BA International Fashion Brand Retailing at GCU





# Financial Services

## City of Glasgow College, City Campus SQA National 5 Skills for Work

### Course Outline

Scotland is internationally recognised as the most important UK financial centre outside London and the South East, with a number of large employers situated in Glasgow. The sector currently employs over 156,700 people (Source - TheCityUK) and is expected to continue to grow. This course is intended to equip learners with the necessary knowledge and skills which will enhance their prospects for employment in the wide range of opportunities within the financial services industry.

Working closely with industry partners in banking, insurance etc, learners will explore the variety and range of employers and the career opportunities which exist within the sector. They will also become familiar with key words and terms used and will develop an awareness of the impact of the sector on modern society. The development of financial acumen and personal financial responsibility are also given high profile. This course is designed to include a large amount of employer engagement including guest speakers, trips and workshops.

### Qualification Breakdown

- Financial Services: Introduction
- Financial Services: Personal Finance Awareness
- Financial Services: Building Positive Relationships with Customers and Colleagues
- Financial Services: Employability Skills

### Course Entry Requirements

- National 4 English

### Attendance Pattern

Tuesday and Thursday 1.30pm - 4pm

### Progression Pathways:

- NC Business
- NC Accounting
- Modern Apprenticeship in Providing Financial Services
- Employment in the Financial Services industry



# Journalism

## Glasgow Clyde College, Anniesland Campus SQA National Progression Award, SCQF 6

### Course Outline

This course will allow you to develop the skills required by journalists. You will be working with professional lecturers who are journalists and work in the industry.

This is a practical course in which you will develop a range of skills required for creating your own journalistic pieces.

These skills include:

- Research and interview skills
- Writing for journalism, looking at feature writing and news writing
- Page layout and design

### Qualification Breakdown

- Media: Research and Interview Skills for Journalism
- Media: Feature Writing
- Media: News Writing for Print
- Media: Basic Website Development

### Course Entry Requirements

- 4 National 5 awards including English
- You should also have a genuine interest in Media

### Attendance Pattern

Tuesday and Thursday 1.30pm - 4pm

### Progression Pathways

- NQ Media
- HN/HNC Media or Journalism



# Scots & Criminal Law

## City of Glasgow College, City Campus SQA National Progression Award, SCQF 6

### Course Outline

Are you interested in a career in Law?  
This course is designed to give you an introduction on the Main Sources of Scots Law, Legal Personnel, Role of Tribunals, Civil Law and Criminal Law.

The class is delivered via short lectures, interactive activities and will cover key areas of Scots Law and Society.

### Qualification Breakdown

- Introduction to Scots Law
- Crime and Society

### Course Entry Requirements

- Higher English at A-C
- Working towards Higher English
- Career aspirations should lie within law
- It is preferable for students to have light knowledge for the law in terms of even why we need the law

### Attendance Pattern

Tuesday and Thursday 1.30pm - 4pm

### Progression Pathways

- HND Legal Services
- Employment within the field of law





# Supply Chain Operations

## City of Glasgow College, City Campus SQA National Progression Award, SCQF 5

### Course Outline

This National Progression Award (NPA) in Supply Chain Operations at SCQF Level 5 enables candidates to develop knowledge and understanding of what a supply chain is, how one operates and the roles and responsibilities of individuals involved. It also develops employability skills for the procurement, supply chain and logistics sector.

The aim of the award is to develop knowledge and understanding of procurement/buying and supply chain structures and processes, including customer relationships, transportation, storage and distribution and aspects of security, safety and sustainability. It will raise awareness of the importance of the procurement, supply chain and freight logistics industry in Scotland and introduce students to the variety of job roles and career opportunities it offers.

The NPA is nationally certificated and mapped to the National Occupational Standards (NOS). It offers the knowledge and understanding required by industry and opens up the possibility of continued study.

The course is designed to prepare students for the progression to employment within the industry or onto further or higher education and will develop core and other transferable skills which will improve employment prospects.

### Qualification Breakdown

- How a Supply Chain Works
- Customers and Suppliers in a Supply Chain
- Personal Development: Self & Work
- Safety, Security & Sustainability in the Supply Chain

### Course Entry Requirements

- National 4 English
- National 5 Administration, Business or Modern Studies

### Attendance Pattern

Tuesday and Thursday 1.30pm - 4pm

### Progression Pathways

- NC/NQ Business or Retail
- HNC/HND Supply Chain Management
- Degree in Logistics related courses at university
- Modern Apprenticeship in Procurement
- Employment as Assistant Buyer/Freight Forwarding Assistant/Logistics Operative/Materials Handler/Procurement Assistant/Warehouse Assistant

### Enhancement

An opportunity for work experience may be available from EDC Procurement Team.





# Up in the Air and on the Ground: Hospitality, Events and Tourism

## City of Glasgow College, City Campus SQA Units, SCQF Level 4/5

### Course Outline

This new and exciting collaborative course brings together the world of Travel, Events and Hospitality in an innovative and inspirational way. It is a practical course which will focus on developing a range of skills that are essential in the 3 related industries. Through your experience in each subject area you will:

- Gain Air Crew experience in our CITYAIR resource which is a simulated airline cabin and purpose built check-in desks
- Develop a range of food and drink service skills from counter service to barista training and be introduced to various types of beverages such as speciality coffees/teas, mocktails and other exotic beverages
- Plan and participate in events within a realistic live restaurant environment

To further enhance learning, visits will be included in the programme to Glasgow Airport and tourist destinations within the city.

### Qualification Breakdown

- Service of Food and Drink SCQF 5
- Introduction to Beverages - Non Levelled
- Assist with an Event SCQF 4
- Event Theming SCQF 4
- Working as Air Cabin Crew: An Introduction SCQF 5
- Resort Representation: An Introduction SCQF 5

### Course Entry Requirements

- 3 National 4 awards including English and Maths

### Attendance Pattern

Tuesday and Thursday 1.30pm - 4pm

### Progression Pathways

- NQ Hospitality/NQ Events
- NC Travel and Tourism
- City and Guilds Diploma in Air Cabin Crew Operations
- Employment as Events Assistants/Food and Beverage Operators/ Exhibition and Conferencing Staff



# Introduction to Food Service Skills

## City of Glasgow College, City Campus City of Glasgow College Certificate, SCQF 4

### Course Outline

**This course is designed for pupils who require additional support.** You will develop a range of employability skills for the Hospitality Industry; including food and drink service skills, food hygiene skills and team working skills. You will build self-confidence and gain an awareness of the opportunities for employment within the Hospitality Industry.

### Qualification Breakdown

- REHIS – Elementary Food Hygiene Certificate
- City of Glasgow College - Introduction to Food Service Skills Certificate
- Customer Care
- Local Tourist Attractions
- Food Service Skills

Work Experience - one week during March of the programme.

### Course Entry Requirements

No formal entry requirements but candidates must have a keen interest in the subject area.

### Attendance Pattern

Thursday 9.30am – 2.45pm

### Progression Pathways

- NQ Hospitality
- NQ Events
- NQ Professional Cookery
- Employment within Front of House, entry level operative positions within hotels, restaurants and catering sector



# Bakery and Cake Decoration

## City of Glasgow College, City Campus SQA National Progression Award, SCQF 4

### Course Outline

The NPA in Bakery is designed to teach you how to prepare a range of doughs, pastries and cakes. During the programme you will learn a range of techniques which you can use when baking and decorating cakes. It will provide you with a valuable insight into the world of bakery and cake decoration. You will be given an introduction into a range of finishing methods and develop an understanding of how to develop, prove and finish enriched doughs as well as an understanding of how to use, select and store bakery ingredients.

All activities will be carried out in purpose built professional bakeries and you will be expected to comply fully with all Health and Safety legislation and Food Hygiene legislation. You will be required to taste the products made in order to improve your palate and ascertain the standards necessary in professional bakeries.

If you are considering a career in the Bakery industry, this is the perfect course for you.

### Qualification Breakdown

- Craft Baking; An Introduction
- Bread Making; An Introduction
- Cake Decoration; An Introduction
- Pastry

### Course Entry Requirements

- Experience of Home Economics gained during S1-S4
- National 4 Literacy and Numeracy
- A genuine interest in the Hospitality industry and a passion for baking
- Attend a taster session in order to assess aptitude to study a practical subject

### Attendance Pattern

Tuesday and Thursday 1.30pm - 4pm

### Progression Pathways

- NC Bakery SCQF 5
- Employment in the Hospitality and Catering



# Professional Cookery

## City of Glasgow College, City Campus SQA National Progression Award, SCQF 3

### Course Outline

**This course is designed for pupils who require additional support.** You will learn how to prepare, cook and serve food. You will be shown how to grate, slice, dice, chop, peel, blend, cream, beat, knead and prove a range of sweet and savoury dishes. You will be given an introduction into a range of cookery processes and develop an understanding of how to poach, boil, bake, steam and roast different foods to create different dishes. All activities will be carried out in purpose built professional kitchens and students will be expected to comply fully with all Health and Safety legislation and Food Hygiene legislation. Students will be allowed to taste the dishes made, in order to improve their palate and ascertain the standards required in professional kitchens. Students will be given an understanding of how to use, select and store ingredients.

### Qualification Breakdown

- Food Hygiene for the Hospitality Industry
- Organisation of Practical Skills
- Understanding Using Ingredients
- Introduction to Food Preparation Techniques
- Introduction to Cookery Processes

N.B. The Food Hygiene Unit comprises of a written multiple choice test, which students have to complete successfully in order to qualify for the Group Award

### Course Entry Requirements

- Some experience of the Home Economics Curriculum gained during S1 to S4
- An enthusiasm for food and/or cooking
- Literacy and Numeracy skills at Level 2
- Students will be invited to attend a Taster Session in order to assess their aptitude to study a practical subject

### Attendance Pattern

Monday 9am - 4.30pm (One hour lunch break)

### Progression Pathways

- NPA in Professional Cookery, SCQF 4 course on a part-time basis at the City of Glasgow College
- NPA Supported Bakery Programme, SCQF 3 on a full-time basis
- Employment in a café, bistro, restaurant or coffee shop washing up, clearing tables, preparing basic ingredients or serving customers







Staying at School



Leaving School



Rest of my world



Advice and Support



News and events

# Professional Cookery

## Glasgow Clyde College, Anniesland Campus SQA National Progression Award, SCQF 4

### Course Outline

The National Progression Award in Professional Cookery is aimed at candidates who may be interested in pursuing a career in the Catering industry. This course will allow you to develop and gain skills in practical cookery, food preparation and baking as well as developing and building organisational skills and confidence. You will learn basic hygiene regulations required to work in the Hospitality industry. This group award is designed to complement your academic studies at school while simultaneously providing you with a valuable insight into the Hospitality and Catering industry.

### Qualification Breakdown

- Food Preparation Techniques: An Introduction
- Food Hygiene for the Hospitality Industry
- Cookery Processes: An Introduction
- Hospitality: Organisation of Practical Skills
- Craft Baking: An Introduction

### Attendance Pattern

Tuesday and Thursday 1.30pm - 4pm

### Course Entry Requirements

- A genuine interest in the Hospitality industry and
- A passion for cooking

### Progression Pathways

- National Certificate (NC) in Professional Cookery SCQF 5
- Employment in the Hospitality and Catering industry, e.g. as a trainee commis chef/apprentice





Staying at School



Leaving School



Rest of my world



Advice and Support



News and events

# Science, Engineering, Design & Manufacture Industries

## Engineering

Engineering enterprises in Scotland employ over 144,000 people across 12,000 establishments. It is estimated that 55% of the engineering workforce are employed in direct technical roles such as engineers, scientists and technologists.

## Construction

Over 178,400 people work in the industry in Scotland. 6.9% of all Scottish employment is in construction. 30% of the industry's workforce is aged 50+ and will soon retire.

## Science

In Scotland there are over 7,500 roles within the Life Sciences sector with 19,000 people working in jobs that include Laboratory Assistant, Technician Trainee, Trainee Scientist, Technician, Scientist and Technologist.

Information from 'My World of Work' courtesy of SDS



Staying at School



Leaving School



Rest of my world



Advice and Support



News and events

# Automotive Engineering

## Glasgow Clyde College, Anniesland Campus SQA National 4 Skills for Work

### Course Outline

This course aims to introduce school pupils to Automotive Engineering and is an ideal taster programme for students considering further studies or a career in the Automotive sector.

This course is delivered at SCQF level 4 and comprises of 4 units. All course units are mandatory to achieve the group award although each unit can be taken as a standalone unit. This is a national course and is assessed internally.

### Qualification Breakdown

- Automotive Skills for Work: The Garage
- Automotive Skills for Work: The Car
- Automotive Skills for Work: The Technician
- Automotive Skills for Work: The Vehicle Modification Project

### Course Entry Requirements

- Working at the senior phase of the curriculum and have clear interest in the subject area
- Taster sessions or interviews may be carried out

### Attendance Pattern

Tuesday and Thursday 1.30pm - 4pm

### Progression Pathways

- City and Guilds Level 1 Certificate
- Diploma in Vehicle Maintenance SCQF Level 4
- Modern Apprenticeship in the Automotive sector





# Building Services Engineering

**Glasgow Kelvin College, Springburn Campus**  
**SQA National Progression Award, SCQF 5**

## Course Outline

Are you interested in working in the Building Services Engineering sector or gaining a qualification leading onto Higher Education? On successful completion of this course and referral from the College, you will also secure a guaranteed registration place with the trade institutional bodies. This registration is structured and designed to lead onto an interview for an apprenticeship.

## Qualification Breakdown

- Basic Electrical Installation Operations
- Basic Plumbing Operations
- Basic Heating and Ventilation Operations
- Basic Refrigeration and Air Conditioning
- Energy and the Environment
- Systems, Roles & Responsibilities
- Science

## Course Entry Requirements

- 3 National 4 awards
- National 4 Maths and/or Physics would be advantageous
- Candidates will be required to attend a pre-course interview and aptitude test

*Please note: Students are not allowed in workshops without boots and overalls. It is the young person's responsibility to bring these to College.*

## Attendance Pattern

Tuesday and Thursday 1.30pm - 4pm

## Progression Pathways

- NC/HNC/HND/Degree in any building services related discipline
- Modern Apprenticeship in Construction industry





# Mechanical Engineering

## Glasgow Kelvin College, Springburn Campus SQA Higher National Certificate, SCQF 7

### Course Outline

*"The UK needs over one million new engineers and technicians in the next five years"* Royal Academy of Engineering

*"Average age of engineer in the UK is 54"* BBC News

*"Chartered Engineers earn an average of £63,000 a year"* Engineering Council

Together with many other countries, the UK economy is fast becoming reliant upon Science, Technology, Engineering and Maths (STEM) industries. This, combined with the ageing population of the current engineering fraternity, creates unrivalled opportunities for aspiring engineers and technicians. As an engineer your skills will be in demand and you will work at the forefront of an exciting and evolving industry.

This course could be your first step towards a career as an engineer or technician. You will study the fundamental concepts of mechanical engineering including dynamics, statics, thermodynamics and fluid mechanics. You will gain skills in subjects such as CAD, engineering drawing and other industry essential subjects, which takes place in the classroom, CAD laboratory and a purpose built engineering laboratory.

### Qualification Breakdown

- Dynamics
- Thermofluids
- Pneumatics & Hydraulics
- Statics and Strength of Materials
- Materials Selection
- Engineering Mathematics I
- Communication: Practical Skills
- Quality Management: An Introduction
- Engineering Principles
- Computer Aided Design
- Engineering Drawing
- Graded Unit I

### Course Entry Requirements

- Higher Maths or Higher Physics at A-C
- An interest in mechanical engineering

### Attendance Pattern

Monday and Tuesday 9am - 4pm

Continuous attendance required August-June

*Please note: Independent travel is required.*

### Progression Pathways

- HND Mechanical Engineering
- Dependent on meeting entry requirements, degree courses in engineering at university
- Modern Apprenticeship in engineering
- Employment as a junior technician



# Computer Aided Design

## Glasgow Kelvin College, Springburn Campus SQA Professional Development Award, SCQF 7

### Course Outline

Proficiency in Computer Aided Design (CAD) is essential within engineering, construction and graphical design industries. As such, this course is very popular with engineers, construction/CAD technicians and graphical designers looking to upskill. The knowledge and skills learned will prove invaluable in realising your aspiration to become an engineer, technician or designer.

This course of study teaches CAD within the disciplines of mechanical engineering, civil engineering, architectural engineering and graphical design. You will become skilled in the use of Autodesk software packages, enabling you to effectively tackle complex CAD related tasks and problems. You will undertake all your studies within a purpose built CAD laboratory that contains a range of CAD associated equipment that includes 3D printers, 3D scanners and virtual reality equipment.

The PDA in CAD is a nationally recognised SQA qualification specifically tailored to teach the CAD knowledge and skills required by industry.

### Qualification Breakdown

- CAD: 2D I
- CAD: 3D Surface and Modelling (Double Unit)
- CAD: Principles
- CAD: Visualisation, Rendering and Presentation
- CAD: Feature Based Modelling I

### Course Entry Requirements

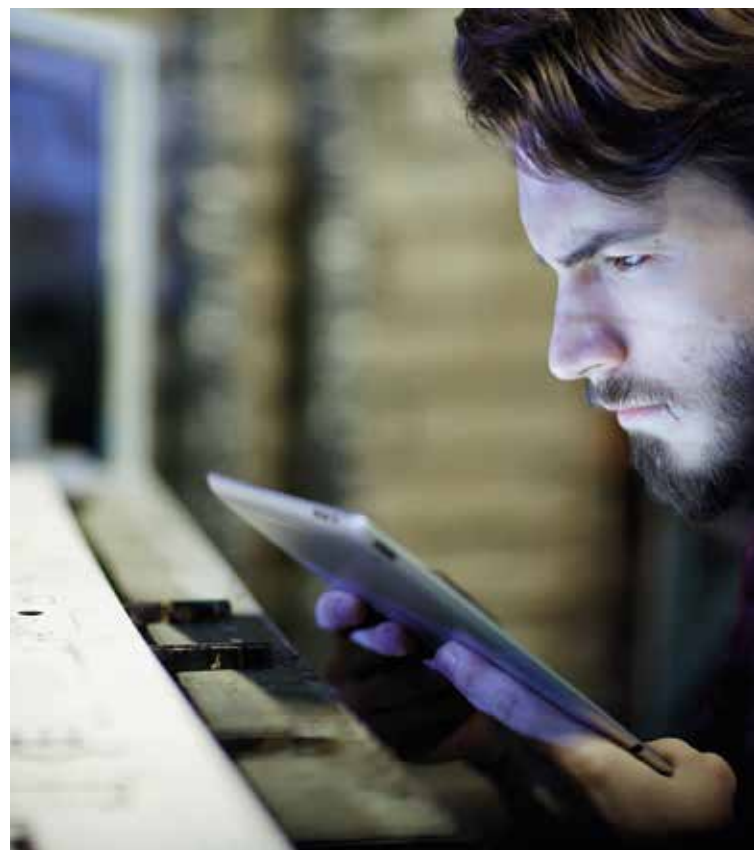
- 3 National 5 awards including Design and Manufacture, Maths, Computing Science or Graphic Communication
- Working towards Higher Design and Manufacture or Higher Graphic Communication

### Attendance Pattern

Tuesday and Thursday 1.30pm - 4pm  
Continuous attendance required August-June

### Progression Pathways

- HNC/D Computer Aided Design
- HND Engineering programmes (with Higher Maths or Higher Physics)
- Dependent on meeting entry requirements, related degree courses at university
- Employment as a junior CAD technician or engineering apprentice



# Construction

## Glasgow Kelvin College, Springburn Campus SQA National 4 Skills for Work

### Course Outline

This Skills for Work course covers practical construction crafts in 5 different trade areas. It is a suitable level of entry for candidates with an aptitude for practical craft work who could cope with demands of working at National 4.

During the programme you will gain skills and knowledge in a range of trades including carpentry, brick laying, painting and decorating as well as roof tiling. This will allow you to identify the trades you enjoy and therefore make an informed choice of career and progression pathways.

In addition to developing the skills necessary for each trade, you will also develop skills and attitudes that enhance employability, including the ability to work independently and as part of a team, problem solving and communication.

### Qualification Breakdown

- Construction Crafts: Employability Skills
- Construction Crafts: Plumbing
- Construction Crafts: Half-Brick Walling
- Construction Crafts: Brickwork Techniques
- Construction Crafts: Site Carpentry and Bench Joinery
- Construction Crafts: Decorative Painting
- Construction Crafts: Decorative Finishes Using Waterborne Paints
- Construction Crafts: Roof Tiling
- Construction Crafts: Practical Copper Pipework

### Course Entry Requirements

- Ability to work at National 4 level
- The willingness to work and engage as part of a team
- A commitment to support health and safety at work
- A keen interest in a career in the Construction industry

*Please note: Students are not allowed in workshops without boots and overalls. It is the young person's responsibility to bring these to College.*

### Attendance Pattern

Tuesday and Thursday 1.30pm - 4pm

### Progression Pathways

- NPA Joinery, Painting, Roofing or Bricklaying, SCQF 5
- Modern Apprenticeship in construction crafts



# Construction

## Glasgow Kelvin College, Springburn Campus SQA National Progression Award, SCQF 5

### Course Outline

The course is designed for candidates who are looking to enter into a Modern Apprenticeship in the following trades: Brickwork, Carpentry & Joinery, Painting & Decorating.

### Qualification Breakdown

- Bricklaying
- Carpentry & Joinery
- Painting & Decorating
- Health and Safety in the Construction Environment
- Construction Occupation Practices
- Efficient Construction Practices
- Appreciation of Access Platforms and Equipment
- Information & Communication Technology
- Employment and Behavioural Skills

### Course Entry Requirements

- National 4 English, Maths and a Science
- Aptitude test
- Interview

### Attendance Pattern

Monday 9am - 4.15pm

Tuesday 9am - 4.15pm

Wednesday 9am - 12.15pm

Continuous attendance required August-June

*Please note: Independent travel is required.*

### Progression Pathways

- City & Guilds Bench Joinery
- NC Built Environment SCQF Level 6
- HNC Construction Management SCQF Level 7
- Modern Apprenticeship in Construction Trades (CITB)

*Please note: Students are not allowed in workshops without boots and overalls. It is the young person's responsibility to bring these to College.*





# Construction Crafts

## City of Glasgow College, City Campus SQA National 4 Skills for Work

### Course Outline

**This course may be suitable for pupils who require additional support.** It is designed specifically to give candidates with an interest in the Construction industry the opportunity to test their aptitude in a variety of the main trade skills. During the programme you will gain skills and knowledge in a range of trades including carpentry, brick laying, painting and decorating as well as electrical installation. This will allow you to identify the trades you enjoy and therefore make a more informed choice of career and progression pathways within this highly rewarding industry.

### Qualification Breakdown

- Construction Crafts: Employability Skills
- Construction Crafts: Plumbing
- Construction Crafts: Half-Brick Walling
- Construction Crafts: Site Carpentry and Bench Joinery
- Construction Crafts: Carpentry and Joinery Techniques
- Construction Crafts: Decorative Painting
- Construction Crafts: Electrical Installation
- Construction Crafts: Practical Copper Pipework

### Course Entry Requirements

- National 3/4 Numeracy and Literacy
- Ability to work at National 4 level
- The willingness to work and engage as part of a team
- Able to act under instruction and direction
- A commitment to support health and safety at work under the direction of lecturing staff
- A keen interest in a career in the Construction industry

### Attendance Pattern

Wednesday 1.30pm - 4pm

### Progression Pathways:

- Construction Craft SCQF 5
- NQ in construction related course
- Modern Apprenticeship in Construction Crafts



# Construction Crafts

## City of Glasgow College, City Campus SQA National 5 Skills for Work

### Course Outline

The purpose of this course is to give candidates with an interest in the construction industry the opportunity to test their aptitude in a variety of main trade skills. You will have the opportunity to gain skills and experience in brick work, carpentry and decorating. This will allow you to identify the craft area you enjoy most and therefore make an informed choice of progression within this highly rewarding industry.

### Qualification Breakdown

- Construction Crafts: Employability Skills
- Construction Crafts: One Brick Walling
- Construction Crafts: Bench Joinery
- Construction Crafts: Decorative Painting Techniques

### Course Entry Requirements

- Working at National 4/5
- National 4 Practical Woodworking or Craft & Design
- The willingness to work and engage as part of a team
- Able to act under instruction and direction
- A commitment to following health and safety at work procedures

### Attendance Pattern

Tuesday and Thursday 1.30pm - 4pm

### Progression Pathways:

- NQ in Construction related course
- Modern Apprenticeship in Construction Crafts



# Construction Skills for Young Women

## City of Glasgow College, City Campus SQA National 4 Skills for Work

### Course Outline

Women tend to be underrepresented in the Construction industry despite the fantastic career opportunities available. The purpose of this course is to give young women with an interest in the Industry the opportunity to engage in construction practical skills in a safe environment. The course is designed to allow students to make a more informed choice of progression within this highly rewarding industry. Candidates will also develop wider skills and attitudes that will enhance their general employability and can be used to progress within full time education.

### Qualification Breakdown

- Construction Crafts: Employability Skills
- Construction Crafts: Plumbing
- Construction Crafts: Half-Brick Walling
- Construction Crafts: Site Carpentry and Bench Joinery
- Construction Crafts: Decorative Painting
- Construction Crafts: Decorative Finish
- Construction Crafts: Carpentry and Joinery Techniques

### Course Entry Requirements

- Pupils in S3-6 capable of working at SCQF 4
- The willingness to work and engage as part of a team
- A commitment to work in a manner which supports health and safety at work under the direction of lecturing staff
- A keen interest in a career in the Construction industry

### Attendance Pattern

Tuesday and Thursday 9.30am - 12noon

### Progression Pathways:

- Construction Craft SCQF 5
- NQ in Construction related course
- Modern Apprenticeship in Construction Crafts





# Construction Management

## Glasgow Kelvin College, Springburn Campus SQA Higher National Certificate, SCQF 7

### Course Outline

The HNC Construction Management is a unique opportunity to complete a recognised qualification within one year while still at school. This course is designed to provide in-depth insight into the roles, responsibilities and duties performed by Construction Management Trainees in the Building industry.

### Qualification Breakdown

- Construction Technology: Substructure
- Building Services in Large Buildings
- Building Services: Introduction
- Site Administration
- Construction Technology: Domestic Construction
- Construction Materials and Specification
- Standard Forms of Construction Contracts
- CAD: 2DI
- HNC Construction Management: Graded Unit 1
- Health and Safety in Construction
- Construction Technology: Industrial/Commercial Superstructure
- Construction Site Surveying

### Course Entry Requirements

- Higher Maths and English
- One other Higher, preferably Physics or Chemistry
- Successful performance at interview

### Attendance Pattern

Thursday and Friday 9am – 4pm  
Continuous attendance required August-June

*Please note: Independent travel is required.*

### Progression Pathways:

Successful completion of the HNC Construction Management and a Graded Unit at B, students can move on to:

- HND Construction Management and then
- Progress to Year 2 BSc Construction Management at Glasgow Caledonian University
- Modern Apprenticeship in Construction industry





# Exploring Science

## Glasgow Kelvin College, Springburn Campus SQA National 4/5 Skills for Work

### Course Outline

Exploring Science opens up a whole universe of potential discovery. science underpins our studies of stars and planets, the research behind programmes like 'Blue Planet 2', the experiments in Harry Potter's 'Potions' classes, food technology, clothing, fabrics and materials.

This course is an introductory qualification to science and offers a wide range of science programmes to suit a variety of career options. You can explore a range of industries and services, and career opportunities in science laboratories locally, nationally, and globally. You will develop the basic practical skills and knowledge needed for working in a laboratory including measuring, weighing and preparing compounds and solutions. Practical skills will also be developed in measuring radioactivity, chemical handling and laboratory instrumentation. As part of the course you will be presented for SQA National 5 Skills for Work in Laboratory Skills.

### Qualification Breakdown

- Careers using Laboratory Science
- Working in a Laboratory
- Practical Skills
- Practical Investigation

### Course Entry Requirements

- National 4 Biology, Chemistry, Physics or Science
- SCQF 4 or SCQF 5 units in Biology, Chemistry or Physics
- SCQF 5 units in Mathematics

### Attendance Pattern

Tuesday and Thursday 1.30pm - 4pm

### Progression Pathways

- NQ Applied Science
- HNC/HND Lab Science
- Dependent on meeting entry requirements, degree courses in Lab Science or other technological disciplines at university
- Modern Apprenticeship in Lab Science
- Employment in NHS, pharmacies, bio science companies



# Maritime Skills

## City of Glasgow College, Riverside Campus SQA National 5 Skills for Work

### Course Outline

Candidates will explore a variety and range of local, national and global career opportunities in the maritime sector, including commercial sea-fishing, the Royal Navy, the Merchant Navy, inland waterways and marine leisure, ports and harbours.

They will be introduced to the operation of boats and equipment, including: boat handling, the use of ropes, wires and chains and effective anchoring, mooring and securing a vessel. The course involves an introduction to marine navigation, where candidates learn how to use a marine chart to plot position using standard marine instruments, and taking account of the weather.

The safety aspects of any job in the maritime sector are tackled including:

- Safe working practices on board ship
- Life-saving principles
- Basic first aid
- Basic fire safety
- Basic engineering involved with small boats, such as pumping and steering mechanism are reviewed
- The routine care and maintenance of the engine and auxiliaries on a boat

### Qualification Breakdown

- Seamanship: An Introduction
- Maritime Environment: An Introduction
- Small Boat Engineering
- Health and Safety in the Maritime Sector
- Employability Skills and Careers in the Maritime Sector

### Course Entry Requirements

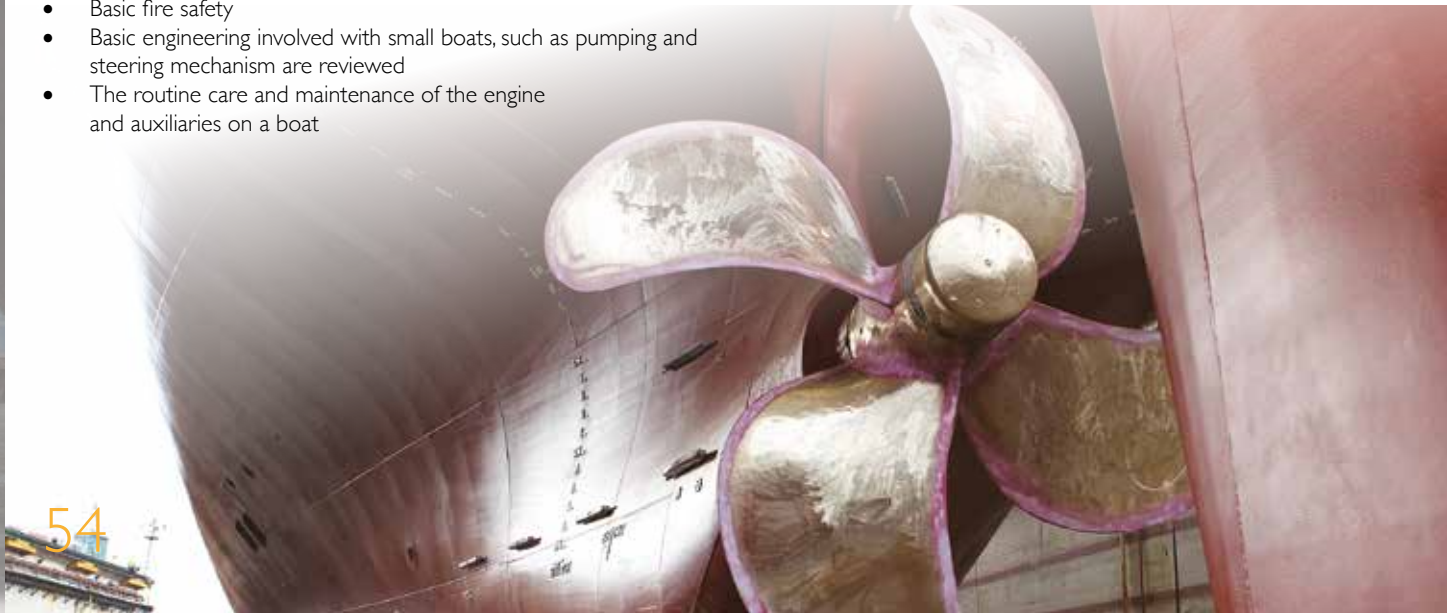
- National 5 Maths, English and one other science
- Working towards National 5 Maths, English and one other science

### Attendance Pattern

Tuesday and Thursday 1.30pm – 4pm

### Progression Pathways

- NC Maritime Studies
- Ratings training
- Merchant Navy
- Royal Navy
- Royal Fleet Auxiliary



# Foundation Apprenticeships



**FOUNDATION APPRENTICESHIPS**  
available in  
**ENGINEERING**



**FOUNDATION APPRENTICESHIPS**  
available in  
**CREATIVE AND DIGITAL MEDIA**



**FOUNDATION APPRENTICESHIPS**  
available in  
**CIVIL ENGINEERING**



**FOUNDATION APPRENTICESHIPS**  
available in  
**SCIENTIFIC TECHNOLOGIES**

## What is a Foundation Apprenticeship?

A Foundation Apprenticeship (FA) is a work-based learning opportunity for senior phase pupils. The majority of FA programmes last two years, with pupils beginning their FA in S5, however there are some one year FA programmes available for S6 pupils. If you choose to study an FA, you will spend part of the school week out at college or with a local employer, and will complete the FA alongside your National 5s and Highers. A Foundation Apprenticeship can help you gain valuable work experience and access work-based learning opportunities while still at school.

## Learning in the Workplace

By giving you earlier exposure to the world of work, you will be developing the skills, experience and knowledge you need when you leave school. An FA also helps you develop the skills employers want including timekeeping, problem solving, communication and teamwork. During the FA you will work on real projects with an employer. Some of Scotland's biggest organisations are involved, including Barclays, Network Rail, Scottish Water and the NHS. You will gain work experience, a qualification recognised by industry and connections with employers, all while you are still at school. It's the chance to get a head start on your career path and the perfect opportunity to try the career out – then you can decide if it's the right career for you!

On successful completion of the FA programme there are a number of progression pathways open to you including accelerated entry onto a Modern Apprenticeship or continued study at college or university, dependent on meeting entry requirements. Should you choose to study a related HNC/HND at college, all successful FA students will be guaranteed an interview with City of Glasgow, Glasgow Clyde and Glasgow Kelvin Colleges. Each of the one and two year FA frameworks are linked to key sectors of the Scottish economy that have identified a skills shortage. This means there are employment opportunities if you choose to go straight into work from school.

*Please note: Some elements of the Foundation Apprenticeship programmes are subject to change, including college campus and finish times.*

# Foundation Apprenticeship in Accountancy

## City of Glasgow College/Glasgow Clyde College SQA Foundation Apprenticeship, SCQF 6

### Course Outline

A Foundation Apprenticeship in Accountancy is a great way to get hands-on experience in this fast paced, constantly changing industry. You will have the unique chance to develop skills and knowledge across a range of accountancy topics in a college environment, alongside a valuable work placement with an employer.

The number of people employment in the Finance sector is currently 236,500, that's 9% of all employment in Scotland making it the second largest key sector. Glasgow is the second largest regional employer in this sector with 60,000 jobs. Employment prospects suggest a national growth of 4,800 jobs by 2020.

If you are interested in helping businesses keep track of their money, finding new ways to grow and make bigger profits, you love a challenge and are a good problem-solver, a Foundation Apprenticeship in Accountancy could be your solution.

### Qualification Breakdown

**Knowledge** - NPA Accountancy, SCQF 6:

- Preparing Management Accounting Information
- Analysing Accounting Information
- Preparing Financial Accounting Information
- Recording data in the ledger

**Skills** – Units from SVQ 3 Accounting, SCQF 6 – Advanced Diploma in Accounting:

- Advanced Bookkeeping (Association of Accounting Technicians- AAT)
- Final Accounts Preparation (AAT)
- Indirect Tax (AAT)

**Competence** – Work placement with an employer, industry engagement and site visits

*Please note: NPA Accountancy contains the 3 units from Higher Accounting*

### Course Entry Requirements

- S5 pupil committed to studying a 2 year Foundation Apprenticeship
- Capable of working at Higher grade over S5 and S6
- Able to achieve a Higher in English, Maths or Business by the end of S6
- An interest in developing greater awareness of the industry and a strong desire to work in the Finance sector

### Attendance Pattern

Year 1: Tuesday and Thursday 1.30pm - 4.30pm

Year 2: Up to two days per week shared between college and employer placement

### Progression Pathways

- Modern Apprenticeship in Accounts and Finance
- HNC Accounting, HNC Business, HNC Admin and IT, HNC Marketing, HNC Supply Chain, or any other business related course at college
- Dependent on meeting entry requirements, related university courses
- Employment in the Financial sector





# Foundation Apprenticeship in Business Skills

## City of Glasgow College SQA Foundation Apprenticeship, SCQF 6

### Course Outline

Management, leadership and business administration are key skills that are essential to the success of a business. This FA will develop your skills to: become an inspiring leader – someone who sets the tone, culture and direction of an organisation; discover your management style – understand how a business runs and how to influence people; and understand the role of administration – the vital support that allows any company to function effectively.

The course helps develop knowledge, behaviours and a unique set of transferrable skills that can be applied to any business – no matter how big or small. You will study areas that will help you appreciate business priorities such as Digital Marketing, Procurement, Enterprise, HR and Finance. You will develop your knowledge of small and large organisations, public firms, private enterprise and the charity sector. Your independent working skills will be challenged as well as your ability to work as part of a team.

Your Foundation Apprentice journey will take you through industry challenges such as product design or enterprise creation, learning based on current business trends and innovations and real work experience as an administrator in a business.

### Qualification Breakdown

**Knowledge** – NPA Business Skills, SCQF 6:

- Understanding Business
- Management of People and Finance
- PC Passport: Working with IT Software - Word Processing and Presenting Information
- PC Passport: Working with IT Software – Spreadsheet and Database
- Contemporary Business Issues
- Work Placement

**Skills** - Units from SVQ 3 Business and Administration, SCQF 6:

- Plan how to manage own performance in a business environment
- Communicate in a business environment

- Support other people to work in a business environment
- Design and produce documents in a business environment

**Competence** - Work placement with an employer; industry engagement and site visits

*Please note: NPA Business Skills contains 2 units from Higher Business Management*

### Course Entry Requirements

- S5 pupil committed to studying a 2 year Foundation Apprenticeship
- Capable of working at Higher grade over S5 and S6
- Able to achieve a Higher in Accounting, Administration, Business, Economics, English, History or Modern Studies by the end of S6
- An interest in developing greater awareness of the industry and a strong desire to work in the Business sector

### Attendance Pattern

**Year 1:** Tuesday and Thursday 1.30pm - 4.30pm

**Year 2:** Up to two days per week shared between college and employer placement

### Progression Pathways

- Modern Apprenticeship in Business Administration
- HNC Business, HNC Admin and IT, HNC Marketing, HNC Supply Chain, HNC Accounting or any other business related course at College.
- Dependent on meeting entry requirements, related university courses in a range of Business disciplines
- Employment in the Business sector



# Foundation Apprenticeship in Financial Services

## City of Glasgow College/Glasgow Clyde College SQA Foundation Apprenticeship, SCQF 6

### Course Outline

The Financial Services sector in Scotland currently employs over 85,400 people, contributing £7 billion to the UK economy. Employment in this sector is predicted to increase, and by 2020 job opportunities will have grown by 4,800.

Scotland is internationally recognised as the most important UK financial centre outside of London and the South East. There are a wide range of financial services available which means a range of employment opportunities in a variety of areas including banking, investment management, corporate finance, insurance, life assurance and pensions. Studying an FA in Financial Services will give you the opportunity to gain valuable knowledge, skills and work experience in this exciting industry.

### Qualification Breakdown

**Knowledge** – NPA Financial Services, SCQF 6:

- Financial Services: An Introduction
- Financial Services: The Regulatory Framework
- Financial Services: Communication
- Financial Services: Promoting Positive Customer Relationships
- Financial Services: Personal Finance Awareness
- Work Placement

**Skills** – Units from SVQ 3 Providing Financial Services, SCQF 6:

- Develop yourself to improve and maintain workplace competence in a financial services environment
- Develop productive working relationships in a financial services environment
- Ensure you comply with regulations in the financial services environment

**Competence** - Work placements with employers, industry engagement and site visits

### Course Entry Requirements

- S5 pupil, committed to studying a two year Foundation Apprenticeship
- Capable of working at Higher grade over S5 and S6
- Able to achieve a Higher in Accounting, Business or Economics by the end of S6
- Credit check required
- An interest in developing greater awareness of the industry and a strong desire to work in the business sector

### Attendance Pattern

Year 1: Tuesday and Thursday 1.30pm - 4.30pm

Year 2: Up to two days per week shared between college and employer placement

### Progression Pathways

- Modern Apprenticeship in Financial Services or related field
- HNC/HND level in Financial Services or Business at college
- Dependent on meeting entry requirements, related university courses at degree level in Business and Finance
- Employment in the Financial Services sector



# Foundation Apprenticeship in Civil Engineering

## Glasgow Kelvin College SQA Foundation Apprenticeship, SCQF 6

### Course Outline

Our towns and cities are designed and built by civil engineers. They plan airports based on wind speed and noise pollution. They come up with solutions for cyclists and cars to safely share the road. They create everything around us, from our tallest buildings, to canals, bridges, roads and motorways, and even electricity networks. If you enjoy design and technology, physics or maths, and computing, then a career in civil engineering could be for you.

This Foundation Apprenticeship course allows you to develop the skills required by modern professional Civil Engineering Technicians, and provides an insight to the many career options available. You will study the principles and practices utilised by engineers and consultancy teams working in the fields of renewable energy, roads and bridges, flood alleviation, commercial buildings, marine works and environmental protection. By the end of the programme you will have completed the first stage of a Modern Apprenticeship and significantly enhanced your employability skills.

### Qualification Breakdown

**Knowledge** - NC Civil Engineering, SCQF 6:

- Civil Engineering Materials
- Civil Engineering Project
- Civil Engineering Site Work
- Civil Engineering Technology
- Computer Aided Drafting: An Introduction
- Construction Site Surveying: An Introduction
- Health and Safety in the Construction Industry
- Mathematics: Craft 1
- Mechanics for Construction: An Introduction
- Mathematics for Construction Technicians
- Construction Project Management: An Introduction
- Sustainability in the Construction Industry



**Skills** - Unit from SVQ 3 Site Technical Support, SCQF 6:

- Develop and maintain working relationships of personal development
- Maintain professional relationships and practice in built environment design

**Competence** - Work placements with employers, industry engagement and site visits

### Course Entry Requirements

- S5 pupil committed to studying a 2 year Foundation Apprenticeship
- Capable of working at Higher grade over S5 and S6
- Able to achieve a Higher in Maths, Physics or Chemistry by the end of S6
- An interest in developing greater awareness of the industry and a strong desire to work in the Civil Engineering sector

### Attendance Pattern

Year 1: Tuesday and Thursday 1.30pm - 4.30pm

Year 2: Up to two days per week shared between college and employer placement

### Progression Pathways

- Modern Apprenticeship in Civil Engineering or other construction technician area
- HNC Civil Engineering
- Dependent on meeting entry requirements, related university courses at degree level in engineering
- Employment in the Engineering sector

# Foundation Apprenticeship in Engineering

## Glasgow Kelvin College SQA Foundation Apprenticeship, SCQF 6

### Course Outline

Engineers help create everything from milk cartons, to aeroplanes, wind turbines to trains, they find new and better ways to solve problems. Wages in the sector are well above the national average so if you enjoy maths, design and technology, physics or chemistry and computing, then a career in engineering could be for you. Engineering Enterprises in Scotland employ over 168,600 people across 12,000 establishments. Scotland accounts for about 8% of engineering employment in the UK. It is estimated that 55% of the workforce in the engineering sectors in Scotland are employed in direct technical roles such as engineers, scientists and technologists.

The FA in Engineering aims to give pupils the opportunity to develop the skills and knowledge to enter into a career in engineering and the advanced manufacturing sector as well as other engineering related industries. The programme is designed to provide participants with theory, practice and related work experience.

### Qualification Breakdown

**Knowledge** – NC Engineering Systems, SCQF 6:

- Communication
- Engineering: Applying Information Technology
- Mathematics: Technician 1
- Mechanical Engineering Principles
- Engineering Systems
- Engineering Materials
- Graphical Engineering Communication
- Electrical Principles
- Health and Safety: Engineering
- Pipework Systems

**Skills** - Units from SVQ 5 Performing Engineering Operations, SCQF 6:

- Working Efficiently and Effectively in Engineering
- Complying with statutory regulations and organisational safety requirements

- Using and interpreting engineering data and documentation
- Wiring and testing electrical equipment and circuits
- Forming and assembling electrical cable enclosure and support systems

**Competence** – Work placement with employers, industry engagement and site visits

### Course Entry Requirements

- S5 pupil committed to studying a 2 year Foundation Apprenticeship
- Capable of working at Higher grade over S5 and S6
- Able to achieve a Higher in Maths, Physics or Chemistry by the end of S6
- An interest in developing greater awareness of the industry and a strong desire to work in the Engineering sector

### Attendance Pattern

Year 1: Tuesday and Thursday 1.30pm - 4.30pm

Year 2: Up to two days per week shared between college and employer placement

### Progression Pathways

- Modern Apprenticeship in an engineering related field
- HNC/HND level in a range of engineering courses at college
- Dependent on meeting entry requirements, related university courses at degree level in a range of engineering disciplines
- Employment in the Engineering sector





# Foundation Apprenticeship in Mechanical Engineering

## City of Glasgow College SQA Foundation Apprenticeship, SCQF 6

### Course Outline

Engineering enterprises in Scotland employ over 168,600 people across 12,000 establishments, 20,000 of those jobs are in the Glasgow area. It is estimated that 55% of this workforce are employed in direct technical roles such as engineers, scientists and technologists. The products from the sector are in high demand but the sector itself is suffering from a shortage in highly-skilled people. Based on employment in 2017, it is estimated that 12% of the engineering workforce will need to be replaced by 2027. This means job opportunities for you if you are looking for a career in engineering.

Engineering is about finding practical solutions to problems that society faces. Engineers and Technicians shape the world we live in: they design, install and maintain structures, machines and products that fill our modern world. The Foundation Apprenticeship in Mechanical Engineering aims to give pupils the opportunity to develop the skills and knowledge to enter into a career in engineering and the advanced manufacturing sector. The programme is designed to provide participants with theory, practice and related work experience. During the course you will learn how to work safely in an engineering environment, carry out engineering activities efficiently and effectively and use and communicate technical information.

### Qualification Breakdown

**Knowledge** - NC Mechanical Engineering, SCQF 6:

- Graphical Engineering Communication
- Communication
- Engineering: Applying Information Technology
- Engineering Dynamics: An Intro
- Engineering Dynamics
- Mathematics: Technician 1
- Engineering Materials
- Pneumatics & Hydraulics
- CAD for Engineers
- Engineering Quality
- Statics
- Thermofluids

**Skills** - Units from SVQ Performing Engineering Operations, SCQF 5:

- Producing components using hand fitting techniques
- Preparing and using lathes for turning operations
- Working efficiently and effectively in Engineering
- Using and interpreting engineering data and documentation
- Complying with statutory regulations and organisational safety requirements

**Competence** - Work placement with employers, industry engagement and site visits

### Course Entry Requirements

- S5 pupil committed to studying a 2 year Foundation Apprenticeship
- Capable of working at Higher grade over S5 and S6
- Able to achieve a Higher in Maths by the end of S6
- An interest in developing greater awareness of the industry and a strong desire to work in the Engineering sector

### Attendance Pattern

Year 1: Tuesday and Thursday 1.30pm - 4.30pm

Year 2: Up to two days per week shared between college and employer placement

### Progression Pathways

- Modern Apprenticeship in an engineering related field
- HNC/HND level in mechanical engineering and engineering related courses at college
- Dependant on meeting entry requirements, related university courses at degree level in a range of engineering disciplines
- Employment in the Mechanical Engineering sector



# Foundation Apprenticeship in Creative and Digital Media

## City of Glasgow College/Glasgow Kelvin College/ Glasgow Clyde College SQA Foundation Apprenticeship, SCQF 6

### Course Outline

A career in the Creative Industries sector could include roles within interactive media, TV, radio, computer gaming, publishing, film, animation and online media. Over 97,000 people work in Scotland's creative industries and with such a wide variety of jobs to choose from, skilled people are always in demand.

Developments in technology mean, as a new entrant to this sector, you must be multi-skilled and able to work over a variety of platforms. Starting in S5, a Foundation Apprenticeship in Creative Digital Media presents an opportunity for senior phase pupils to undertake industry specific qualifications and blend an academic qualification with work-based learning. So if you like the idea of combining creative thinking with technical skills, design and storytelling, then a career in creative and digital media may be the right career choice for you.

This course is delivered on a rotational basis across the three colleges. You will gain experience and skills in each of the following specialised areas:

- Glasgow Kelvin College - Radio and Sound Production
- Glasgow Clyde College - TV and Journalism
- City of Glasgow College - Animation and Design

### Qualification Breakdown

**Knowledge** - NPA Creative and Digital Media: Technologies, Processes and Practices, SCQF 6:

- Creative Industries: An Introduction – Scotland
- Creative Industries: Understanding a Creative Brief
- Media: Understanding the creative process
- Storytelling for the Creative Industries

**Skills** – Diploma in Creative and Digital Media, SCQF 6:

- Work effectively with others in the Creative Industries
- Ensure Your Own Actions Reduce Risks to Health and Safety
- Communicating Using Digital Marketing/Sales Channels
- Use Digital and Social Media in Marketing Campaigns

**Competence** - Work placement with an employer, industry engagement and site visits

### Course Entry Requirements

- S5 pupil committed to studying a 2 year Foundation Apprenticeship
- Capable of working at Higher grade over S5 and S6
- Able to achieve a Higher in IT, English or Maths by the end of S6
- An interest in developing greater awareness of the industry and a strong desire to work in the media

### Attendance Pattern

Year 1: Tuesday and Thursday 1.30pm - 4.30pm

Year 2: Up to two days per week shared between college and employer placement

### Progression Pathways

- Modern Apprenticeship in Digital Media or related field
- HNC/HND level in Digital Media or Creative Industries at college
- Dependent on meeting entry requirements, related university courses at degree level in Creative Industries
- Employment in the Creative Industries sector



# Foundation Apprenticeship in Hardware and Systems Support

## Glasgow Kelvin College SQA Foundation Apprenticeship, SCQF 6

### Course Outline

In this Foundation Apprenticeship students will learn the fundamental components to establishing and supporting company networks, users accounts and permissions. This includes establishing security protocols preventing cyber-attacks, malicious malware and general cyber security.

Through work based learning, participants will then focus on the development of computer telecommunications protocols such as Voice Over Internet Protocol (VOIP) and exchange configurations. Every business in the country depends on technology. That's why hardware and system support staff are vital. There are a wide variety of jobs to choose from and the industry needs more skilled people.

There are 100,000 people employed in IT & Telecoms and it is estimated that growth in this industry could translate into 39,000 new jobs, across many occupations and sectors, over the next 5 to 7 years. If you enjoy Computing Science, Maths or IT, a career in hardware and system support could be for you as this FA will prepare you for your transition into the world of work or onto further study in this field.

**THIS FA IS DELIVERED ON A 1 YEAR AND 2 YEAR BASIS**

### Qualification Breakdown

**Knowledge** - NPA Professional Computer Fundamentals, SCQF 6:

- Security Fundamentals
- Network Fundamentals
- Server Administration Fundamentals

**Skills** - Units from Diploma for IT & Telecommunications Professionals, SCQF 6:

- Personal Effectiveness 2
- Health and Safety in IT & Telecom
- IT & Telecom System Operation 2
- Testing IT & Telecom Systems 2
- Working with IT & Telecoms Hardware and Equipment 1

**Competence** - Work placement with an employer

### Course Entry Requirements – 2 Year Framework

- S5 pupil committed to studying a 2 year Foundation Apprenticeship
- Capable of working at Higher grade over S5 and S6
- Able to achieve a Higher in a relevant subject area including Maths, Computing Science or IT by the end of S6
- An interest in developing greater awareness of the industry and a strong desire to work in the IT sector

### Attendance Pattern – 2 Year Framework

- Year 1: Tuesday and Thursday 1.30pm - 4.30pm
- Year 2: Up to two days per week shared between college and employer placement

### Course Entry Requirements – 1 Year Framework

- S6 pupil capable of achieving Higher grade in S6
- National 5 at A-C in Maths, Computing Science or IT and will achieve Higher by the end of S6
- An interest in developing greater awareness of the industry and a strong desire to work in the IT sector

### Attendance Pattern – 1 Year Framework

Tuesday college/Thursday work placement 9am – 4.30pm  
One week college/work placement block in June

### Progression Pathways

- Modern Apprenticeship in IT, Telecoms or related field
- HNC/HND in Computing related courses at college
- Dependent on meeting entry requirements, related university courses at degree level in a Computing related field
- Employment in the IT sector



# Foundation Apprenticeship in Information Technology Software Development

## Glasgow Clyde College/City of Glasgow College SQA Foundation Apprenticeship, SCQF 6

### Course Outline

In this two year Foundation Apprenticeship students will learn the fundamental protocols behind the software development and design process, from concept to scoping functional requirements, user testing and design. Participants will gain a practical insight to key industry sectors such as web development, apps and business solutions. Practical skills will be further developed through work based learning activity with an employer.

A career in Software Development could mean working in a wide range of roles within a diverse industry. Software Development is behind every app you use and every computer game you play. If you work in this sector you could be developing databases, working on virtual reality projects, games design or cyber security. Research suggests that 11,000 new digital technologies job opportunities are anticipated each year until 2020. So if you can think creatively to solve problems and enjoy Computing Science and Maths then you could have a successful career in software development.

### Qualification Breakdown

**Knowledge** - NPA in Software Development, SCQF 6:

- Computing Applications: Development
- Computing: Authoring a Website
- Software Design and Development

**Skills** - Units from Diploma for IT & Telecommunications Professionals, SCQF 6:

- Personal Effectiveness 2
- Health and Safety in IT & Telecom
- Investigating and Defining Customer Requirements for IT & Telecoms Systems 2
- Data Modelling 1

Optional unit:

- Event Driven computer Programming 2
- Procedural Programming 2
- Object Oriented Computer Programming 2

**Competence** - Work placement with an employer; industry engagement and site visits

*Please note: NPA Software Development contains 1 unit from Higher Computing Science*

### Course Entry Requirements

- Pupils entering S5, committed to studying a two year Foundation Apprenticeship
- Pupils must be capable of working at Higher grade over S5 and S6
- Pupils should be able to achieve Higher Maths, by the end of S6
- Pupils must have an interest in developing greater awareness of the industry and a strong desire to work in the IT sector

### Attendance Pattern

Year 1: Tuesday and Thursday 1.30pm - 4.30pm

Year 2: Up to two days per week shared between college and employer placement

### Progression Pathways

- Modern Apprenticeship in IT, Telecoms or related field
- HNC/HND in Computing related courses at college
- Dependent on meeting entry requirements, related university courses at degree level in a Computing related field
- Employment in the IT sector





# Foundation Apprenticeship in Scientific Technologies

## Glasgow Clyde College – 2 Year Framework City of Glasgow College – 1 Year Framework SQA Foundation Apprenticeship, SCQF 6

### Course Outline

Some of the world's biggest advancements happen in a laboratory, from the invention of antibiotics and cancer treatments to gene therapy, science has changed our world. In Scotland there are over 7,500 roles within the Life Sciences sector with 19,000 people working in jobs that include laboratory assistant, technician trainee, trainee scientist, technician, scientist and technologist. These roles span across industry, universities, schools, further education colleges and NHS and involve testing, sampling and supporting scientists with their research.

Starting in S5 the Foundation Apprenticeship in Scientific Technologies presents an opportunity for senior phase pupils, still attending school, to undertake industry specific qualifications and blend an academic qualification with work-based learning. If you like science, have a curious mind and an eye for detail, a career in a lab might be for you.

THIS FA IS DELIVERED ON A 1 YEAR AND 2 YEAR BASIS

### Qualification Breakdown

**Knowledge** – NPA Scientific Technologies, SCQF 6:

- Laboratory Safety
- Mathematics for Science
- Fundamental Chemistry: An Introduction
- Experimental Procedures: Science

**Skills** – Units from SVQ 2 Laboratory and Associated Technical Activities (Industrial Science), SCQF 6:

- Follow Health and Safety Procedures for Scientific or Technical Activities
- Carry Out Simple Scientific or Technical Tests Using Manual Equipment
- Prepare Compounds and Solutions for Scientific or Technical Use

**Competence** - Work placement with an employer, industry engagement and site visits

### Course Entry Requirements – 2 Year Framework

- S5 pupil committed to studying a 2 year Foundation Apprenticeship
- Capable of working at Higher grade over S5 and S6
- Able to achieve a Higher in Chemistry by the end of S6
- An interest in developing greater awareness of the industry and a strong desire to work in the Life Science sector

### Attendance Pattern – 2 Year Framework

- Year 1: Tuesday and Thursday 1.30pm - 4.30pm
- Year 2: Up to two days per week shared between college and employer placement

### Course Entry Requirements – 1 Year Framework

- S6 pupil capable of achieving Higher grade in S6
- National 5 at A-C in Chemistry and will achieve Higher by the end of S6
- An interest in developing greater awareness of the industry and a strong desire to work in the Life Science sector

### Attendance Pattern – 1 Year Framework

Tuesday college/Thursday work placement 9am - 4.30pm  
One week college/work placement block in June

### Progression Pathways

- Modern Apprenticeship in Life Sciences or related field at technician level
- HNC/HND level in a range of Life Science courses at college
- Dependent on meeting entry requirements, related university courses at degree level
- Employment in the Life Science sector



# Foundation Apprenticeship in Food and Drink Operations

## City of Glasgow College SQA Foundation Apprenticeship, SCQF 6

### Course Outline

The Food and Drink industry in Scotland is vast and rapidly expanding, serving up a tempting selection of exciting career prospects. There is growing demand for skills across the whole sector, including food science, product development, nutrition and wellbeing, packaging, research, design and engineering. Based on employment in 2017, 57% of the workforce will need to be replaced by 2027, that's 54,900 jobs with 1,800 of those in this region.

The Foundation Apprenticeship in Food and Drink Operations gives you the chance to learn about the principles of food science and food safety, from developing marketable food products for today's consumer, to the care, legislation and processes involved in creating those products. You will learn in a hands-on way, both in a classroom and as part of a placement in a real workplace.

### Qualification Breakdown

**Knowledge** - NPA Food Manufacture, SCQF 6:

- Food Manufacturing: Fundamentals of Food Science
- Food Manufacturing: Food Production
- Food Manufacturing: Commercial and Social Drivers
- Food Manufacturing: Sustainability
- REHIS Food Hygiene: Elementary
- REHIS Elementary Health and Safety Certificate

**Skills** – Units from SVQ 3 Food and Drink Operations, SCQF 6:

- Develop Productive Working Relationships with Colleagues
- Interpret and Communicate Information and Data in Food and Drink Operations
- Contribute to Continuous Improvement of Food Safety in Manufacture
- Develop a New Product in a Food Business
- Promote and Support Creative Thinking in a Food Business

**Competence** – Work placement with an employer, industry engagement and site visits

### Course Entry Requirements

- S5 pupil committed to studying a 2 year Foundation Apprenticeship
- Capable of working at Higher grade over S5 and S6
- Able to achieve a Higher in English, Maths or Business by the end of S6
- An interest in developing greater awareness of the industry and a strong desire to work in the Food and Drink Operations sector

### Attendance Pattern

Year 1: Tuesday and Thursday 1.30pm - 4.30pm

Year 2: Up to two days per week shared between college and employer placement

### Progression Pathways

- Modern Apprenticeship in Food and Drink Operations
- HNC/HND Food Science and Technology
- Dependent on meeting entry requirements, related university courses in a range of disciplines
- Employment in the Food Operations sector

*Please note: Some elements of this Foundation Apprenticeship may be subject to change.*



# Foundation Apprenticeship in Social Services Children and Young People

## Glasgow Kelvin College/Glasgow Clyde College - 2 Year Framework

## Glasgow Kelvin College/City of Glasgow College - 1 Year Framework

## SQA Foundation Apprenticeship, SCQF 6

### Course Outline

There are over 199,600 social service workers in Scotland today working in a range of settings with a variety of different people. The number employed in childcare is set to expand as the Scottish Government's Early Learning and Childcare Strategy is introduced. This will see a 17% increase in the number of jobs available within the sector, so there are plenty of job opportunities if you choose to work in this field. If you enjoy working with young people, making sure they are healthy and happy and seeing them play, learn and develop confidence this Foundation Apprenticeship could be for you.

THIS FA IS DELIVERED ON A 1 YEAR AND 2 YEAR BASIS

### Qualification Breakdown

**Knowledge** - NPA Social Services and Healthcare, SCQF 6:

- Safeguarding of Children and Young People
- Play for Children and Young People
- Communication with Children and Young People
- Development of Children and Young People
- Promote the Wellbeing and Safety of Children and Young People

**Skills** - Units from SVQ 2 Social Services Children and Young People, SCQF 6:

- Support Effective Communication
- Support the Health and Safety of Yourself and Individuals
- Develop your Own Knowledge and Practice
- Support the Safeguarding of Children

**Competence** - Work placement with an employer, industry engagement and site visits

### Course Entry Requirements – 2 Year Framework

- S5 pupil committed to studying a 2 year Foundation Apprenticeship
- Capable of working at Higher grade over S5 and S6
- Able to achieve a Higher in a relevant subject area including English by the end of S6
- PVG check required
- An interest in developing greater awareness of the industry and a strong desire to work in the Childcare sector

### Attendance Pattern – 2 Year Framework

Year 1: Tuesday and Thursday 1.30pm - 4.30pm

Year 2: Up to two days per week shared between college and employer placement

### Course Entry Requirements – 1 Year Framework

- S6 pupil capable of achieving Higher grade in S6
- National 5 at A-C in English and will achieve Higher by the end of S6
- PVG check required
- An interest in developing greater awareness of the industry and a strong desire to work in the Childcare sector

### Attendance Pattern – 1 Year Framework

Tuesday college/Thursday work placement 9am – 4.30pm

One week college/work placement block in June

### Progression Pathways

- Modern Apprenticeship in Childcare or related field
- HNC/HND Early Education and Childcare and related social care courses at college
- Dependent on meeting entry requirements, related university courses at degree level in a range of disciplines
- Employment in the Care sector



# Foundation Apprenticeship in Social Services and Healthcare

## **Glasgow Clyde College - 2 Year Framework** **City of Glasgow College - 1 Year Framework** **SQA Foundation Apprenticeship, SCQF 6**

### **Course Outline**

There are over 199,600 social service workers in Scotland today working in a range of settings, such as day centres, care homes, charities and hospitals, and with a variety of different service users including the elderly, the homeless or people with physical or learning disabilities. One in 13 people employed in Scotland work in social services. Of these 27% are employed by the third sector, 32% by the public sector and 41% by the private sector.

Starting in S5 or S6 the Foundation Apprenticeship in Social Services and Healthcare presents an opportunity for senior phase pupils, still attending school, to undertake industry specific qualifications and blend an academic qualification with work-based learning.

**THIS FA IS DELIVERED ON A 1 YEAR AND 2 YEAR BASIS**

### **Qualification Breakdown**

**Knowledge** – NPA Social Services and Healthcare, SCQF 6:

- Social Services in Scotland
- Safeguarding People
- Communication in Care Relationships
- Safe Practice and Wellbeing in Social Services
- Human Development and Social Influences

**Skills** – Units from SVQ 2 in Social Services and Healthcare, SCQF 6:

- Support Effective Communication
- Support the Health and Safety of Yourself and Individuals
- Develop your Own Knowledge and Practice
- Support the Safeguarding of Individuals

**Competence** – Work placement with an employer, industry engagement and site visits

### **Course Entry Requirements – 2 Year Framework**

- S5 pupil committed to studying a 2 year Foundation Apprenticeship
- Capable of working at Higher grade over S5 and S6
- Able to achieve a Higher in a relevant subject area including English by the end of S6
- PVG check required
- An interest in developing greater awareness of the industry and a strong desire to work in the Childcare sector

### **Attendance Pattern – 2 Year Framework**

Year 1: Tuesday and Thursday 1.30pm - 4.30pm

Year 2: Up to two days per week shared between college and employer placement

### **Course Entry Requirements – 1 Year Framework**

- S6 pupil capable of achieving Higher grade in S6
- National 5 at A-C in English and will achieve Higher by the end of S6
- PVG check required
- An interest in developing greater awareness of the industry and a strong desire to work in the Healthcare sector

### **Attendance Pattern – 1 Year Framework**

Tuesday college/Thursday work placement 9.00am – 4.30pm

One week college/work placement block in June

### **Progression Pathways**

- Completion of the SVQ 2 in Social Services and Healthcare, with an employer
- Completion of a Modern Apprenticeship at Level 2 or Level 3 in Social Services and Healthcare, with an employer
- Progression to employment, non-apprenticeship route
- HNC in Social Care; Nursing; Additional Support Needs; Occupational Therapy Support and other related areas
- Dependent on meeting entry requirements, related university courses at degree level in Social Work, Nursing, Integrated Services, Occupational Therapy or other related areas





Staying at School



Leaving School



Rest of my world

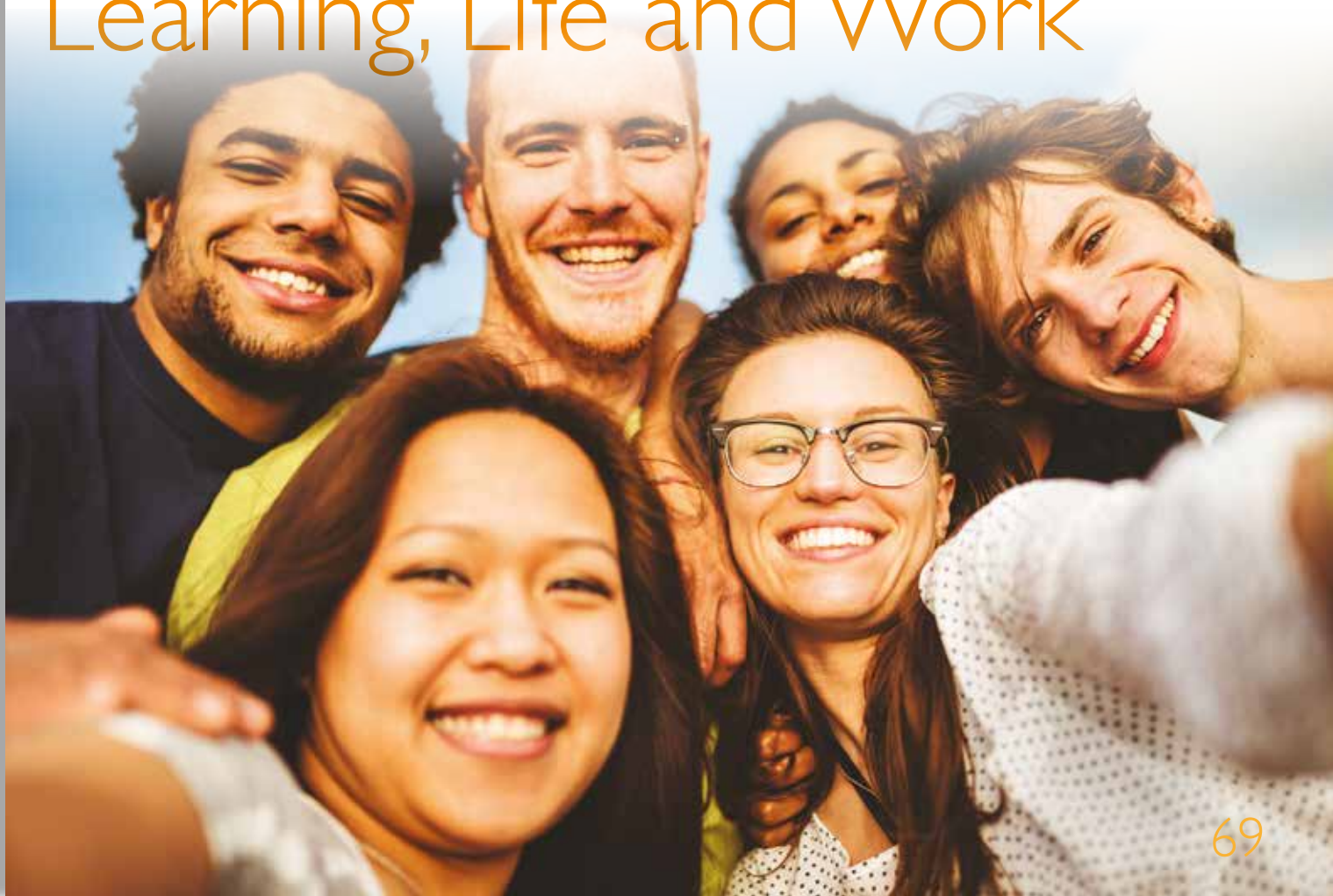


Advice and Support



News and events

# Employability and Skills for Learning, Life and Work



## Supported Courses – Glasgow Kelvin College

### **Transitions School Link S6 Glasgow Kelvin College, Easterhouse Campus SQA National 1**

#### **Course Outline**

**This course is designed for pupils who require additional support.** The aim and focus of this programme is to give pupils working at National 1 the opportunity to experience college one day per week while taking part in an experiential activity based curriculum. The course rotates at the half way stage to allow pupils to take part in all 4 subject areas. All units are delivered at level 1 and 2 depending on the range and ability of the individual learner.

#### **Qualification Breakdown**

- Hobbies and Interests (Art)
- Performing Arts – Group Activity (Music)
- Healthy Eating
- Dramatic Situations

#### **Course Entry Requirements**

- Working at National 1 and towards National 2

**Attendance Pattern** Tuesday 10am - 3pm  
Course runs August-June

#### **Progression Pathways**

- National 1 Skills for Learning Life and Work, full time at college
- National 2 Skills for Learning Life and Work, full time at college

### **Transitions School Link S5 Glasgow Kelvin College, Easterhouse Campus SQA National 1**

#### **Course Outline**

**This course is designed for pupils who require additional support.** The aim and focus of this programme is to give pupils working at National 1 the opportunity to experience college one day per week while taking part in an experiential activity based curriculum. All units are delivered at National 1 and 2 depending on the range and ability of the individual learner.

#### **Qualification Breakdown**

- Food Preparation: Making a Healthy Basic Meal
- Practical Craft Skills: Working with Materials

#### **Course Entry Requirements**

- Working at National 1 or towards National 2

#### **Attendance Pattern**

Thursday 10am - 3pm  
Course runs August-June

#### **Progression Pathways**

- Transitions School Link S6 SQA National 1
- National 1 Skills for Learning Life and Work, full time at college
- National 2 Skills for Learning Life and Work, full time at college



## Supported Courses – Glasgow Kelvin College

### **Transitions School Link S6 Glasgow Kelvin College, Easterhouse Campus SQA National 1/2**

#### **Course Outline**

**This course is designed for pupils who require additional support.** This is a two day programme for pupils in S6, who want to become familiar with college life while undertaking a range of units at National 1 and 2, depending on the ability of the learner. The programme will support pupils to become more independent and better prepared for the transition to college.

#### **Qualification Breakdown**

- Personal Development: Developing Positive Behaviour
- Life in Another Country: Aspects of Life
- Performance Arts: Contributing to a Performance
- ICT: Working with Digital Images

#### **Course Entry Requirements**

- Working at National 1 or towards National 2

#### **Attendance Pattern**

Monday and Tuesday 10am - 3pm  
Course runs August-June

#### **Progression Pathways**

- National 1 Skills for Learning Life and Work, full time at college
- National 2 Skills for Learning Life and Work, full time at college



### **Transitions Vocational Taster Glasgow Kelvin College, Springburn Campus SQA National 2/3**

#### **Course Outline**

**This course is designed for pupils who require additional support.** The aim and focus of this programme is to give pupils working at National 2 or 3 the opportunity to experience college life and take part in a rotation of 4 vocational taster subjects.

#### **Qualification Breakdown**

- Working with Materials (Construction)
- Creating Media content (Comic development)
- Science – Environmental Studies
- Art and Design Capturing Digital Images

#### **Course Entry Requirements**

- Working at National 2 or 3

#### **Attendance Pattern**

Friday 9am – 12noon  
Course runs August-June

#### **Progression Pathways**

- National 2 Skills for Learning Life and Work, full time at college
- National Certificate in Employability, SCQF 3, full time at college
- National 4 Pathways to Employment, full time at college



## Supported Courses – Glasgow Kelvin College

### Transitions Music and Drama Glasgow Kelvin College, Easterhouse Campus SQA National 2

#### Course Outline

This course is designed for pupils who require additional support. The aim and focus of this programme is to give pupils working at National 2 the opportunity to experience college, while developing music and drama skills. These subjects focus on building confidence and team working.

#### Qualification Breakdown

- Personal Achievement: Performing Arts - Individual Activity
- Performance Arts: Contributing to a Performance
- Music: Exploring Sound and Rhythm

#### Course Entry Requirements

- Working at National 2 or 3 with no support

#### Attendance Pattern

Wednesday 10am - 3pm  
Course runs August-June

#### Progression Pathways

- National 2 Skills for Learning Life and Work, full time at college
- National Certificate Employability/Citizenship, SCQF 3, full time at college



### Transitions Construction Glasgow Kelvin College, Easterhouse Campus SQA National 3

#### Course Outline

This course is designed for pupils who require additional support. The aim and focus of this programme is for pupils working at National 3 to gain experience of college life and develop skills for the construction industry. Pupils will get the opportunity to rotate within the construction department to experience the range of trades within the sector.

#### Qualification Breakdown

- Painting and Decorating
- Joinery
- Bricklaying

#### Course Entry Requirements

- Working at National 3

#### Attendance Pattern

Monday 9am - 12noon  
Course runs August-June

#### Progression Pathways

- National Certificate in Employability, SCQF 3, full time at college
- National 4 Pathways to Employment, full time at college
- NPA Construction SCQF 4, full time at college





## Supported Courses - Glasgow Kelvin College

### Sound Engineering and Music Glasgow Kelvin College, Easterhouse Campus SQA Units, SCQF 4/5

#### Course Outline

**This course is designed for pupils who require additional support.** The core of the programme is to provide a project based learning experience catering for a wide range of learning needs, based upon the individual learner's experience of the Creative industries in terms of: music, bands, artists, games, television shows, radio broadcasts or internet based social media platforms and their application.

From skills developed, the learner will become experienced in the use of music technology and recording equipment enabling them to design, record and sequence a radio programme or podcast which will contain: audio, music and background effects. The digital programme will be to industry standard format.

**For further information on any of the courses, please contact: Jennifer Miller at Glasgow Kelvin College on 0141 630 5000 or email: [jmiller@kelvin.ac.uk](mailto:jmiller@kelvin.ac.uk)**

#### Qualification Breakdown

- Audio Acquisition, SCQF 4
- Midi Sequencing, SCQF 4
- Sound Production and Engineering, SCQF 5

#### Course Entry Requirements

- Working at National 3 or 4
- An interests in music, audio/video technology or sound production

#### Attendance Pattern

Tuesday and Thursday 9am – 12noon  
Course runs August-June

#### Progression Pathways

- Music Performance, SCQF 5
- Creative Industries, SCQF 5
- Digital Media Computing, SCQF 4 or 5
- NQ Art – Digital Media, SCQF 5

## Supported Courses - Glasgow Clyde College

**Details of all supported learners courses delivered at Glasgow Clyde College can be found by accessing the link below.**

**[https://www.eastdunbarton.gov.uk/filedepot\\_download/59301/2155](https://www.eastdunbarton.gov.uk/filedepot_download/59301/2155)**



**For further information on any of these courses please contact:**

#### Anniesland Campus

Hugh Kelly  
[hkelly@glasgowclyde.ac.uk](mailto:hkelly@glasgowclyde.ac.uk)  
Tel No 0141 357 7697

#### Cardonald Campus

Iain Jenkins  
[ijenkins@glasgowclyde.ac.uk](mailto:ijenkins@glasgowclyde.ac.uk)  
Tel No 0141 272 3167

#### Langside Campus

Steve Wilson  
[swilson@glasgowclyde.ac.uk](mailto:swilson@glasgowclyde.ac.uk)  
Tel No 0141 272 3772

# Wider Achievement Awards



Every secondary school in East Dunbartonshire offers a wide variety of awards which will demonstrate how student's activity in the community complements their in-school learning supporting them to become successful learners, confident individuals, effective contributors and responsible citizens. Speak to your Guidance Teacher or Year Head to find out which Wider Achievement Awards are delivered in your school.

## The Awards Network

The Awards Network has information on the range of awards available and helps you to identify how these awards can connect together.

Use the link below to help you to find out more about the wider achievement awards available in your school and how it connects to others within the Awards Network.

**[www.awardsnetwork.org](http://www.awardsnetwork.org)**

### Disclaimer

East Dunbartonshire Council will endeavour to deliver courses in accordance with the descriptions set out in this booklet. The Council reserves the right to make variations to the contents or methods of delivery of courses, to discontinue courses and to merge or combine courses if such action is reasonably considered to be necessary by the Education Service. The information given in this booklet is believed correct at the time of publication. The Education Service reserves the right, at its discretion, at any time and for any reason, to make changes to the services offered and set out in this booklet without prior notice including, but not limited to, the following:

- to withdraw the offer of a course which fails to recruit the minimum number required by regulation.
- to make changes to syllabuses and courses for reasons including meeting technological or academic developments or employers' requirements particularly in specialist options.







sustainable thriving achieving

**East Dunbartonshire Council**

[www.eastdunbarton.gov.uk](http://www.eastdunbarton.gov.uk)

#### Other formats

This document can be provided in large print, Braille or on CD and can be translated into other community languages. Please contact the Council's Communications Team at:

East Dunbartonshire Council, 12 Strathkelvin Place, Southbank,  
Kirkintilloch, G66 1TJ Tel: 0300 123 4510

本文档可按要求翻译成中文，如有此需要，请电 0300 123 4510。

اس دستاویز کا اردو تراجم فراہم کیا جاسکتا ہے۔ براہ مہربانی فون نمبر 0300 123 4510 پر رابطہ کریں۔

ਇਸ ਦਸਤਾਵੇਜ਼ ਦਾ ਮੰਗ ਕਰਨ ਤੇ ਪੰਜਾਬੀ ਵਿੱਚ ਅਨੁਵਾਦ ਕੀਤਾ ਜਾ ਸਕਦਾ ਹੈ। ਕਿਰਪਾ ਕਰਕੇ 0300 123 4510 ਫੋਨ ਕਰੋ।

Gabhaidh an sgrìobhainn seo cur gu Gàidhlig ma tha sin a dhìth oirbh. Cuiribh fòin gu 0300 123 4510

अनुप्रास करने पर यह दस्तावेज हिन्दी में भाषांतरित किया जा सकता है। कृपया 0300 123 4510 पर फोन कीजिए।

**CITY OF GLASGOW**  
COLLEGE

**Glasgow Kelvin**  
College

**WEST COLLEGE**  
SCOTLAND

**New College**  
**Lanarkshire**

**GCU**  
Glasgow Caledonian  
University

**GLASGOW CLYDE**  
COLLEGE

[www.eastdunbarton.gov.uk/edopps4all](http://www.eastdunbarton.gov.uk/edopps4all)